

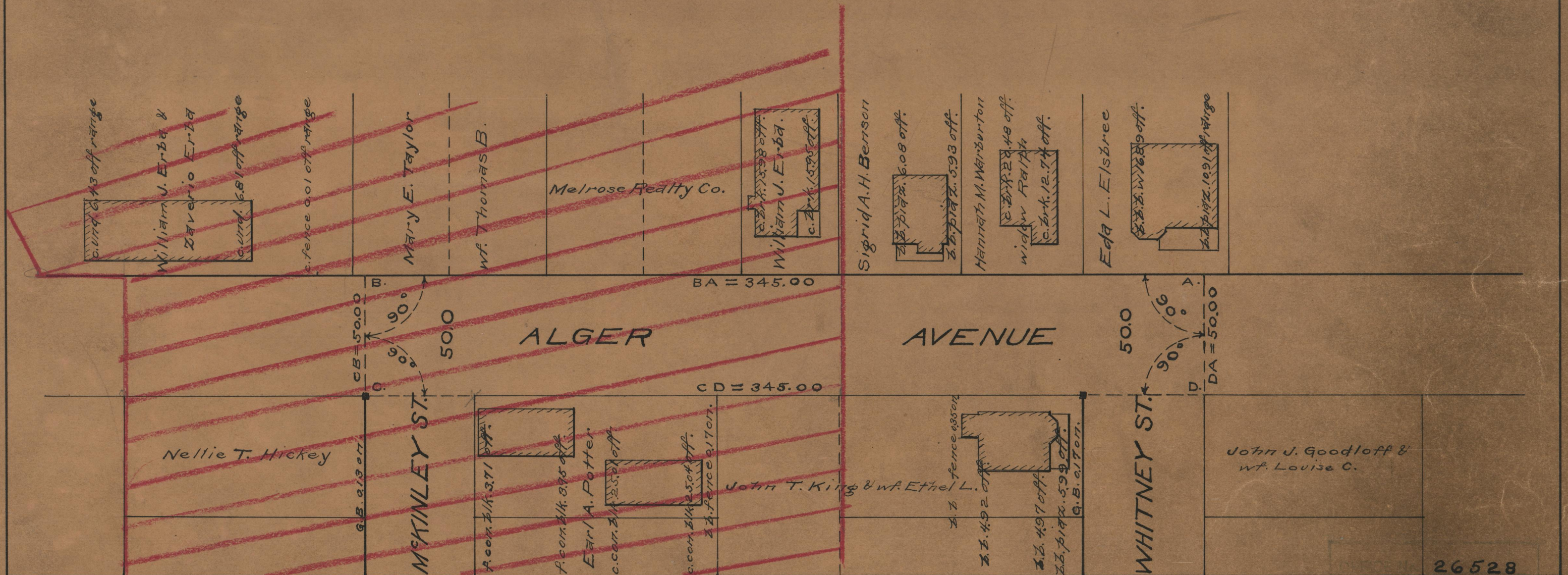
CITY ENGINEER'S OFFICE
STREET LINE DEPT.

Jan. 31, 1936

056621

PLAT OF
ALGER AVENUE
FROM THE RANGE OF THE NORTHERLY LINE OF
WHITNEY ST. TO THE RANGE OF THE
SOUTHERLY LINE OF M^cKINLEY ST.
BOARD OF ALDERMEN
DECEMBER 19, 1935.

SCALE 1"=40'



26528

87
B-1