

PLAT OF FIFTH STREET

FROM SUMMIT AVE. TO NORTH MAIN ST.
IN TWO SHEETS
BOARD OF ALDERMEN

PROVIDENCE, R.I.
CITY ENGINEER'S OFFICE
STREET LINE DEPT.

Nov. 29, 1935

056572

SCALE 1" = 40'

NOT RECEIVED *Mar. 4, 1949*



Not acted upon - Keep

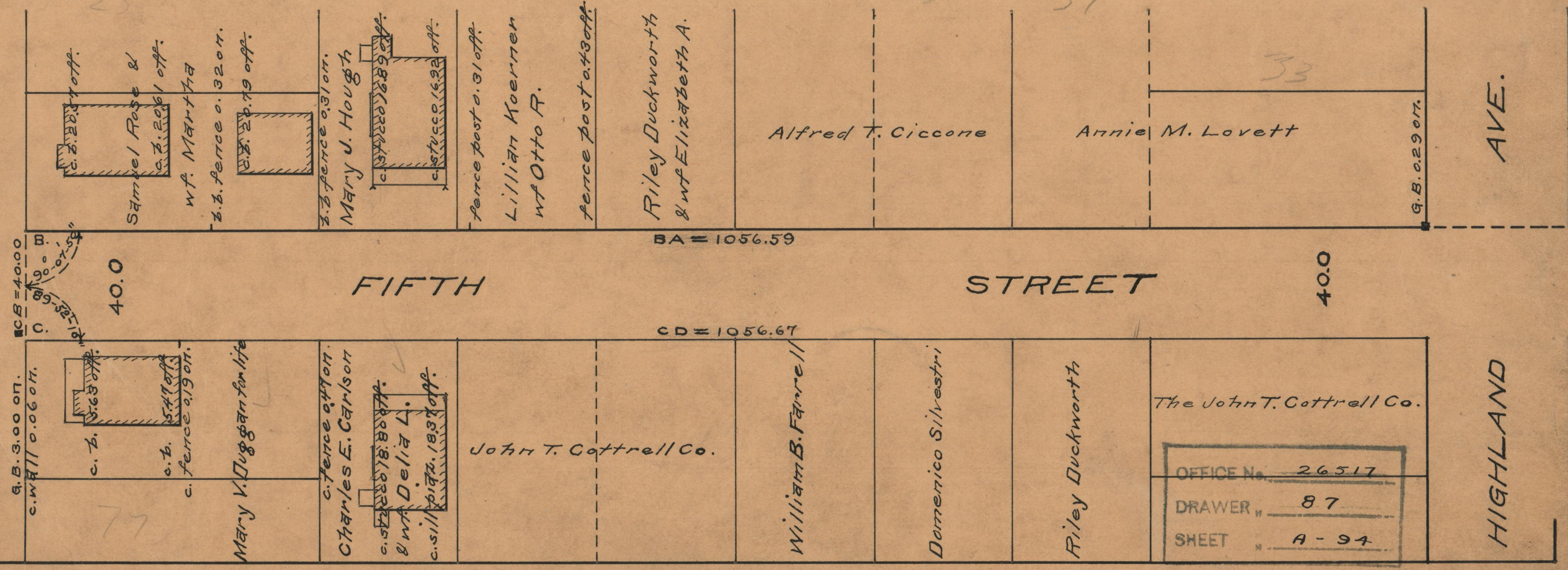
Request put in - Objected finally portion from Highland to Summit from North Main to Summit declared public highway

C/B See 87/6-15

*586.59
506.67
21013.26
506.63*

ST.

NO. MAIN



HIGHLAND AVE.

OFFICE No.	26517
DRAWER	87
SHEET	A-94

*87
A-94*