

# PLAT OF CUMBERLAND STREET

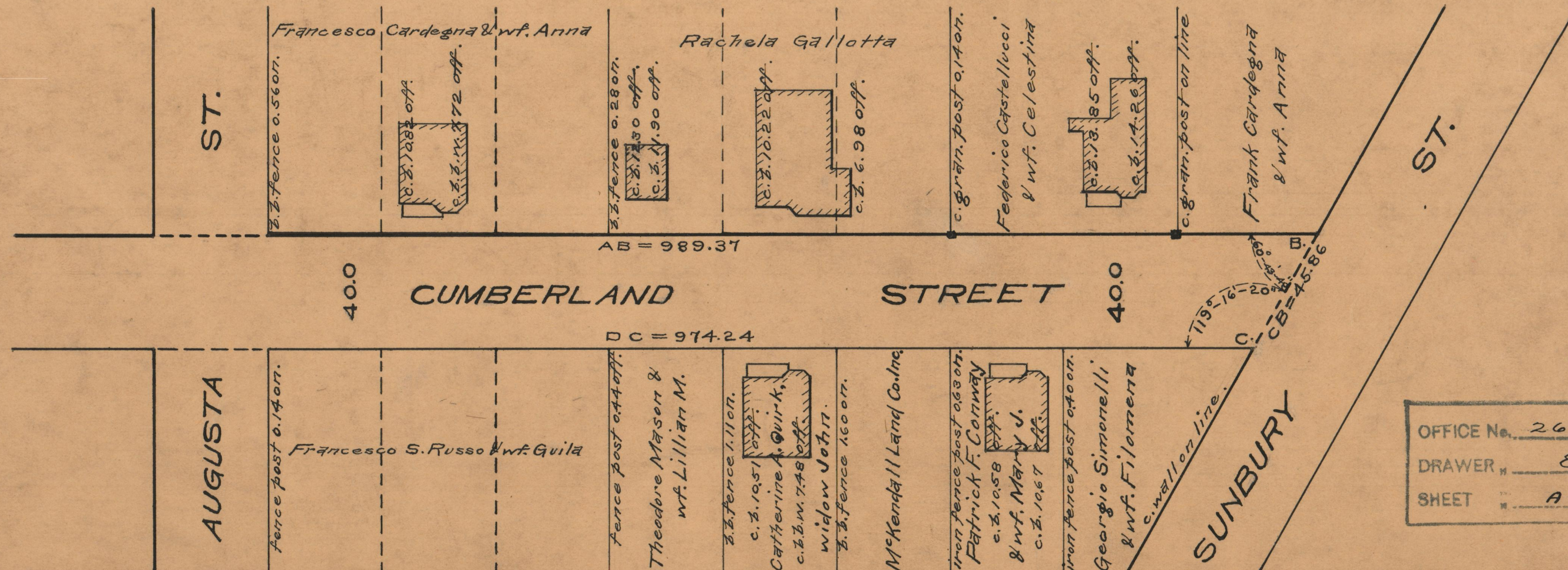
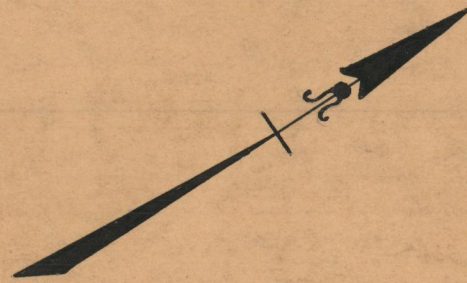
FROM ADMIRAL ST. TO SUNBURY ST.  
IN TWO SHEETS  
BOARD OF ALDERMEN  
MAY 16, 1935.

PROVIDENCE, R.I.  
CITY ENGINEER'S OFFICE  
STREET LINE DEPT.

Nov. 29, 1935

056570

SCALE 1" = 40'



OFFICE No.	26515
DRAWN BY	87
SHEET	A-92