

PLAT OF CUMBERLAND STREET

FROM ADMIRAL ST. TO SUNBURY ST.

IN TWO SHEETS
BOARD OF ALDERMEN
MAY 16, 1935.

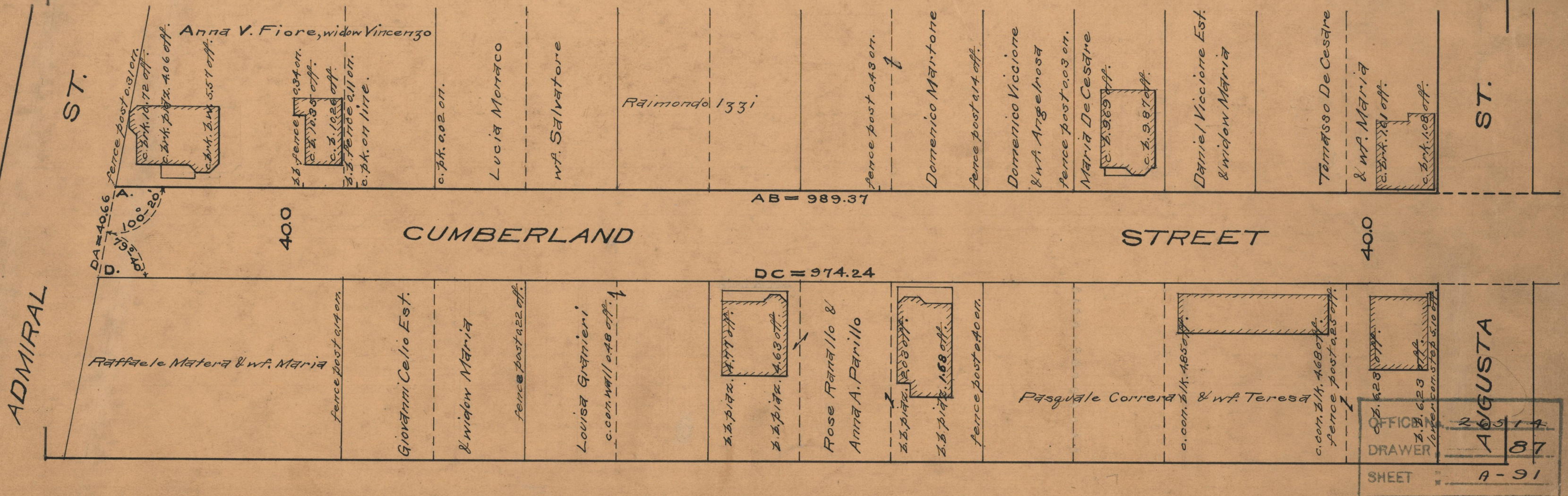
PROVIDENCE, R.I.
CITY ENGINEER'S OFFICE
STREET LINE DEPT.

Nov. 29, 1935

056569

SCALE 1" = 40'

989.37
974.24
21963.61
981.80



OFFICE	2514
DRAWER	87
SHEET	A-91