

G.W.S. 3018-97

PLAT OF TRAINOR STREET

FROM ACORN ST. TO BALBO AVE.
BOARD OF ALDERMEN
JUNE 20, 1935.

PROVIDENCE, R.I.
CITY ENGINEER'S OFFICE
STREET LINE DEPT.
Nov. 29, 1935

056568

SCALE 1"=20'



240.86
20.06

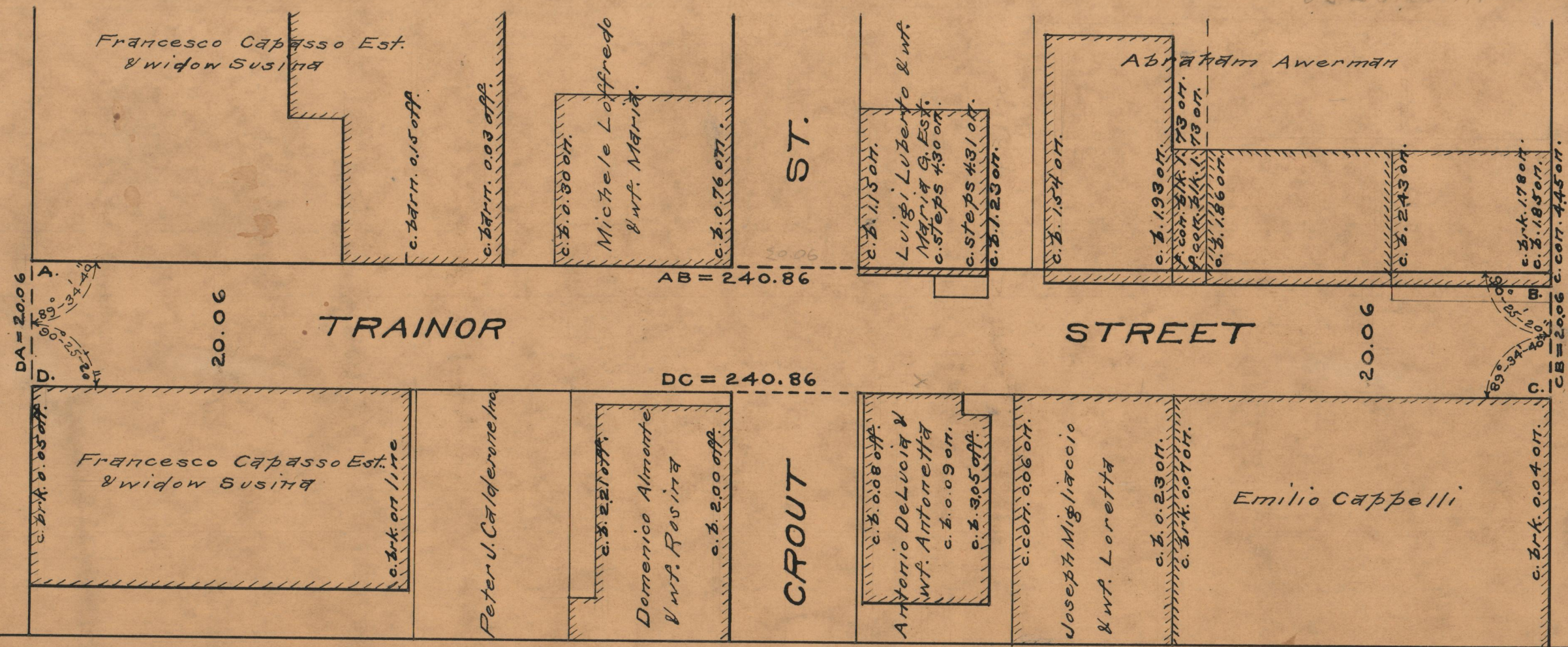
220.80

90 Spruce Str

63 Balbo Ave.

ST.

ACORN



AVE.

BALBO

OFFICE No.	26513
RAWER	87
SHEET	A-90