

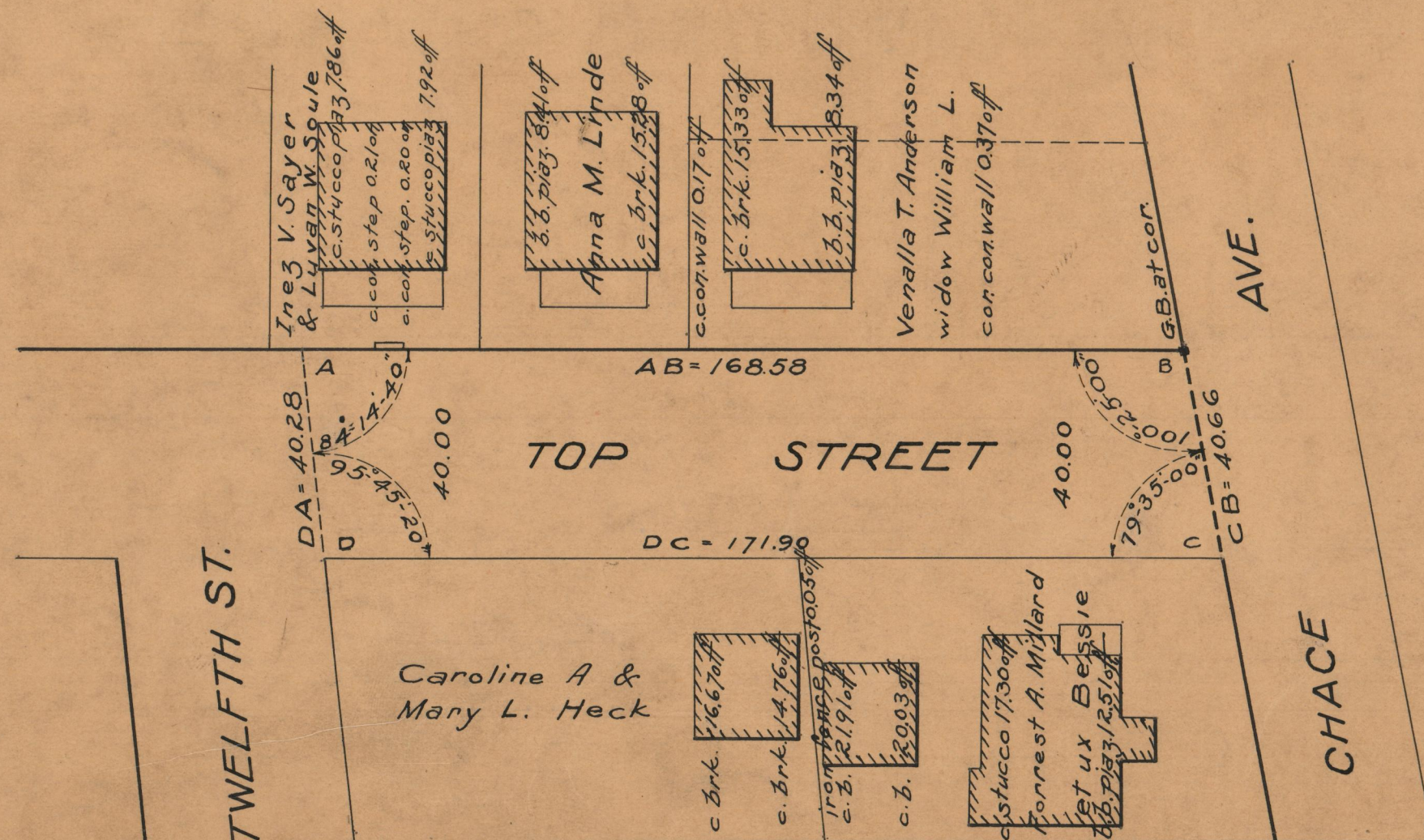
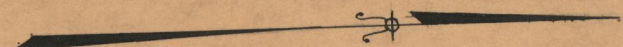
PROVIDENCE, R.I.
CITY ENGINEER'S OFFICE
STREET LINE DEPT.

Nov. 29, 1935

056567

PLAT OF
TOP STREET
FROM TWELFTH ST. TO CHACE AVE.
BOARD OF ALDERMEN
SEPTEMBER 19, 1935.
SCALE 1" = 30'

168.58
171.90
2340.48
170.24



OFFICE No.	26512
DRAWER	87
SHEET	A-89