

PLAT OF EUTAW STREET

FROM CEDAR ST. TO SPRUCE ST.
BOARD OF ALDERMEN
OCTOBER 17, 1935.

PROVIDENCE, R.I.
CITY ENGINEER'S OFFICE
STREET LINE DEPT.

Nov. 29, 1935

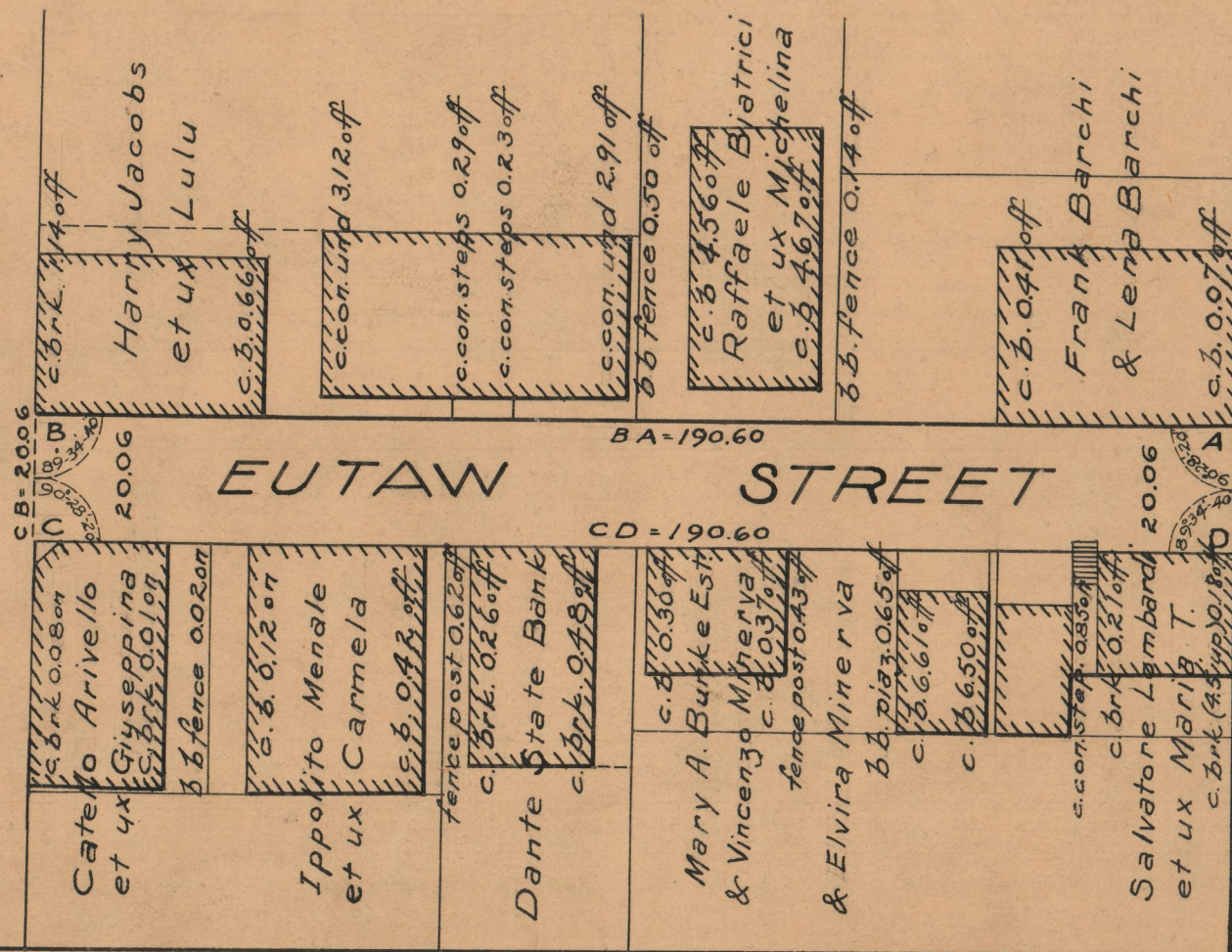
056562

SCALE 1" = 30'



SPRUCE ST.

CEDAR ST.



OFFICE No.	26507
DRAWER	87
SHEET	A-84