

PROVIDENCE, R.I.
CITY ENGINEER'S OFFICE
STREET LINE DEPT.

January 9, 1935

056180

PLAT OF
AMES STREET
FROM ATWELLS AVE. TO ITS NORTHERLY TERMINATION
BOARD OF ALDERMEN

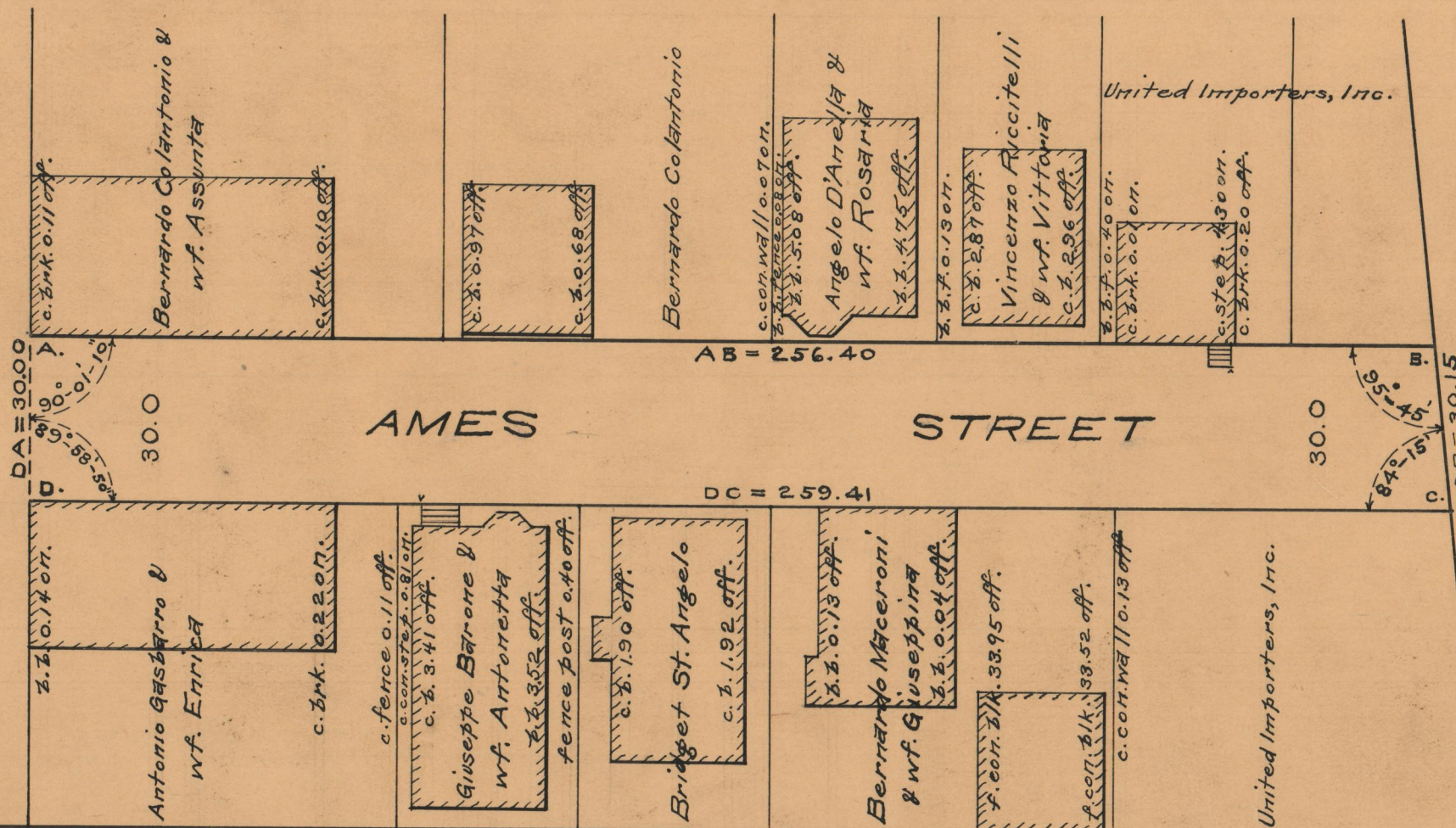
SCALE 1" = 30'

Not Rec.



ATWELLS AVE.

AMES STREET



OFFICE No.	26429
DRAWER #	87
SHEET #	A-79