

G.W.S. 3018-48

PLAT OF QUINCE STREET

FROM OXFORD ST. TO HOUSTON ST.

BOARD OF ALDERMEN

DECEMBER 20, 1934.

SCALE 1" = 40'

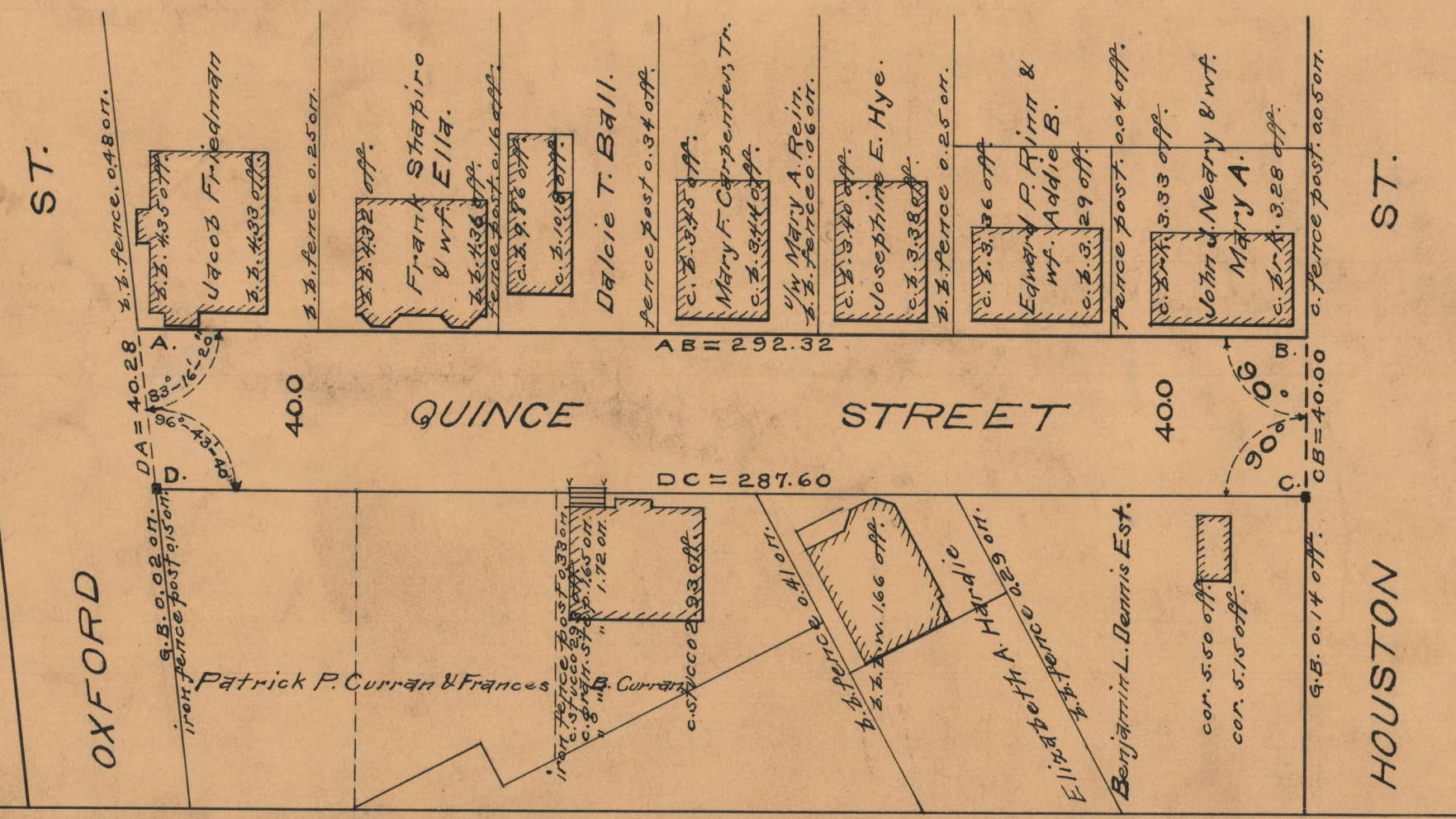
PROVIDENCE, R.I.
CITY ENGINEER'S OFFICE
STREET-LINE DEPT.

December 11, 1934

056146

292.32
 287.60
 2) 579.92
 289.96

292.32
 287.60
 2) 579.92
 289.96



OFFICE No. 26425
 DRAWER " 87
 SHEET " A-77