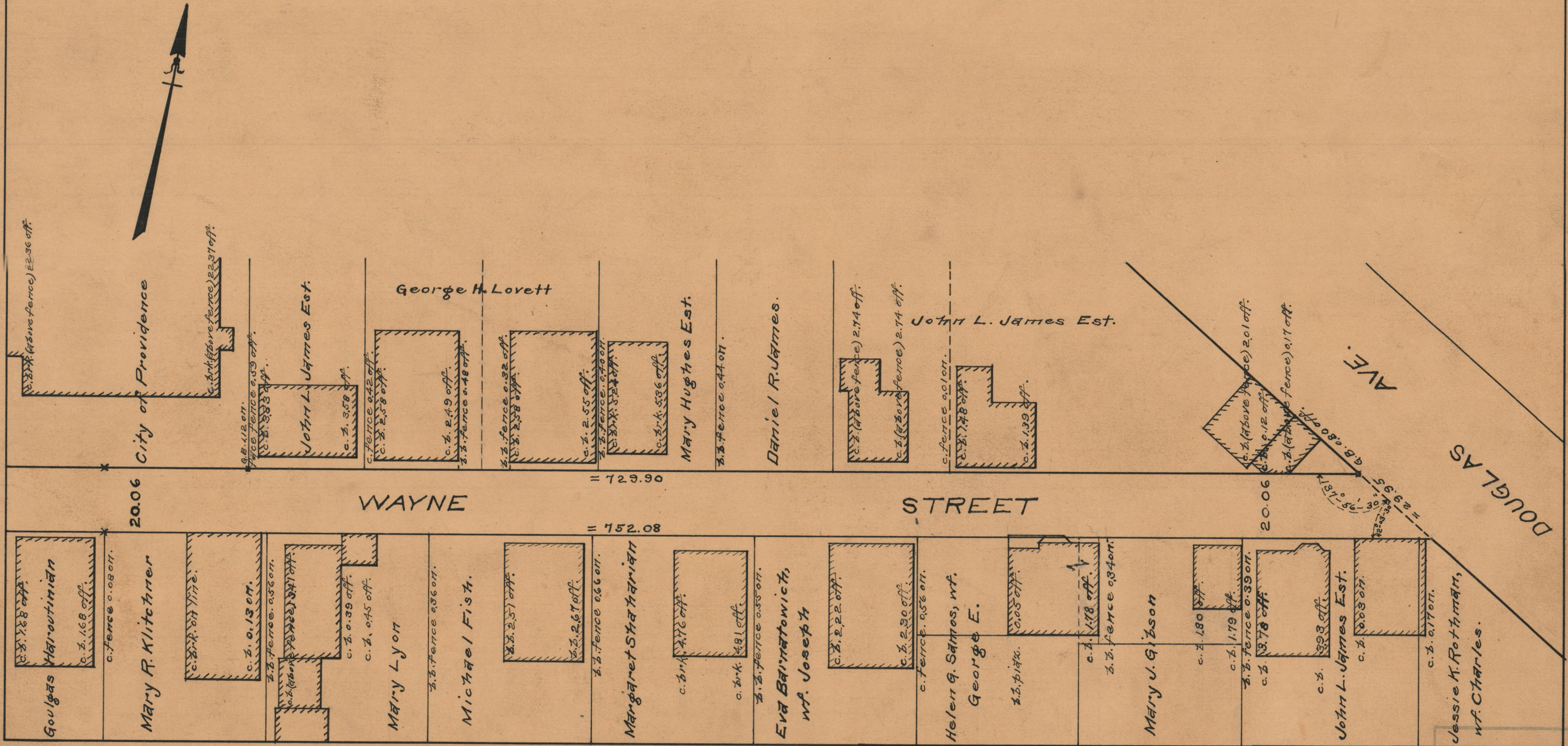


PLAT OF
WAYNE STREET
 FROM CANDACE ST. TO DOUGLAS AVE.
 BOARD OF ALDERMEN
 APRIL 1, 1872.

PROVIDENCE, R.I.
 CITY ENGINEER'S OFFICE
 STREET LINE DEPT.
 August 2, 1934.
 056027

SCALE 1" = 30'

SEE ¹⁵²/_{A-26}



OFFICE No. 26419
 DRAWER 87
 SHEET A-72