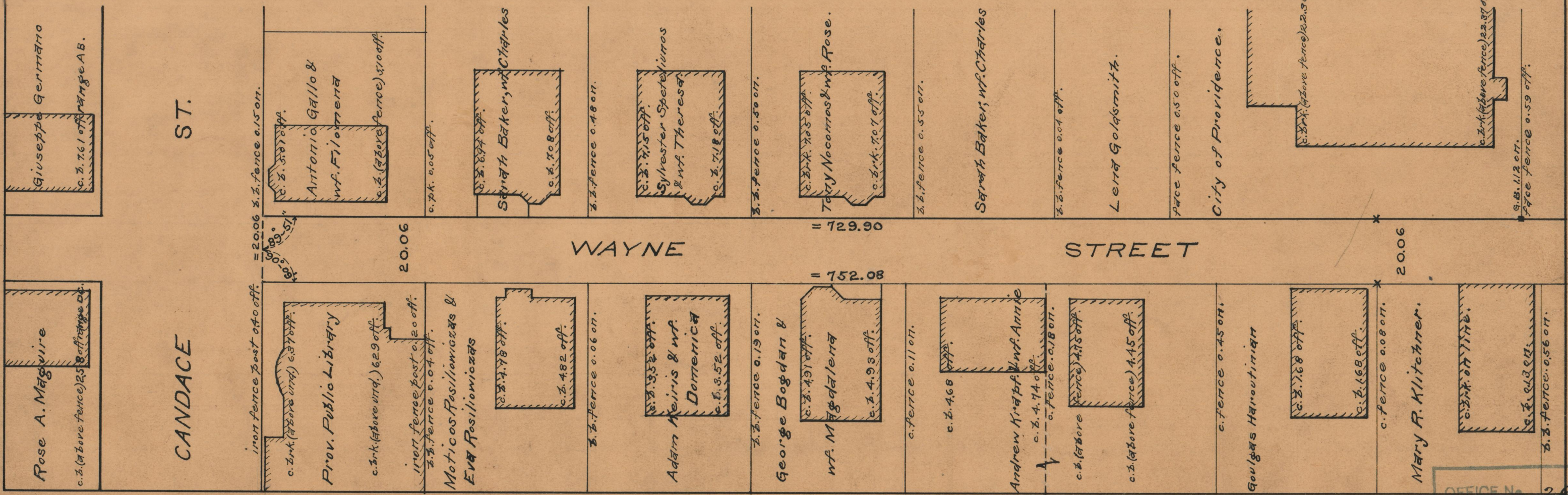


PLAT OF  
**WAYNE STREET**  
FROM CANDACE ST. TO DOUGLAS AVE.  
BOARD OF ALDERMEN  
APRIL 1, 1872.

PROVIDENCE, R.I.  
CITY ENGINEER'S OFFICE  
STREET LINE DEPT.  
August 2, 1934.  
056026

SCALE 1"=30'

SEE 152  
A-26



OFFICE No. 26418  
DRAWER 87  
SHEET A-71