

PROVIDENCE
CITY ENGINEER'S OFFICE
STREET LINE DEPT.

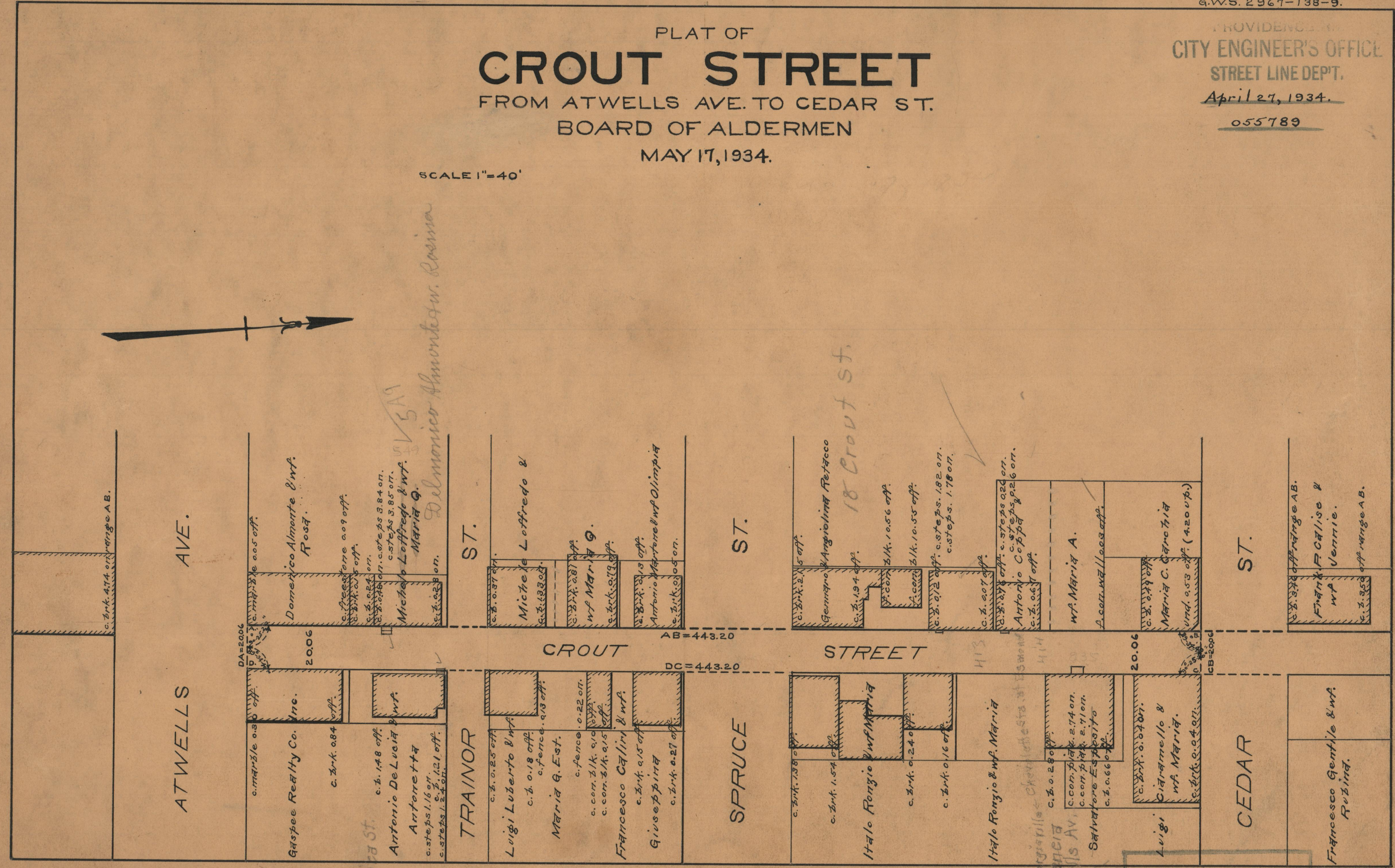
April 27, 1934.

055789

PLAT OF CROUT STREET

FROM ATWELLS AVE. TO CEDAR ST.
BOARD OF ALDERMEN
MAY 17, 1934.

SCALE 1"=40'



ATWELLS AVE.

ATWELLS AVE.

ST.

ST.

ST.

CROUT STREET

TRAINOR

SPRUCE

CEDAR

DA=2006
DB=2006
DC=443.20
AB=443.20
CB=2006

Handwritten notes:
 18 Crout St.
 Delmonico Almonte w. Rosina
 113
 114

Lot Owners and Details:

- Atwells Ave. Side:**
 - Gaspee Realty Co. Inc. (c. b. 0.84 off.)
 - Antonio De Lucia & wf. Antonetta (c. b. 1.48 off., c. steps 1.16 off., c. steps 1.24 off.)
 - Luigi Luberto & wf. Maria Q. Est. (c. b. 0.25 off., c. b. 0.18 off., c. fence 0.13 off., c. fence 0.22 off., c. con. blk. 0.10 off., c. con. blk. 0.15 off.)
 - Francesco Galim & wf. Giuseppina (c. b. 0.15 off., c. b. 0.27 off.)
 - Italo Rongio & wf. Maria (c. b. 1.54 off., c. b. 0.24 off., c. b. 0.16 off.)
 - Luigi (c. b. 0.28 off., c. con. blk. 2.74 on., c. con. blk. 2.11 on., c. b. 0.66 off.)
 - Francesco Gentile & wf. Rubina (c. b. 0.04 on.)
- Crout Street Side:**
 - Domenico Almonte & wf. Rosa (c. b. 0.05 off., c. b. 0.27 off., c. b. 0.24 on., c. b. 0.28 on., c. steps 3.84 on., c. steps 3.85 on., c. b. 0.23 on.)
 - Michele Loffredo & wf. Maria Q. (c. b. 0.37 off., c. b. 0.28 off., c. b. 0.79 off., c. b. 0.13 off., c. b. 0.05 on.)
 - Angiolina Retacco (c. b. 0.25 off., c. b. 1.94 off., c. b. 1.056 off., c. b. 1.055 off., c. b. 0.12 off., c. steps 1.82 on., c. steps 1.78 on., c. b. 0.07 off., c. b. 0.17 off., c. steps 0.20 on., c. steps 0.26 on., c. b. 0.057 off.)
 - wf. Maria A. (c. con. wall 0.003 off., c. b. 0.24 off., c. b. 0.53 off. (420 up))
 - Frank, Calise & wf. Jennie (c. b. 0.37 off. range AB., c. b. 0.35 off. range AB.)

OFFICE No. 26413
 DRAWER 87
 SHEET A-67