

PROVIDENCE, R.I.
CITY ENGINEER'S OFFICE
STREET LINE DEPT.

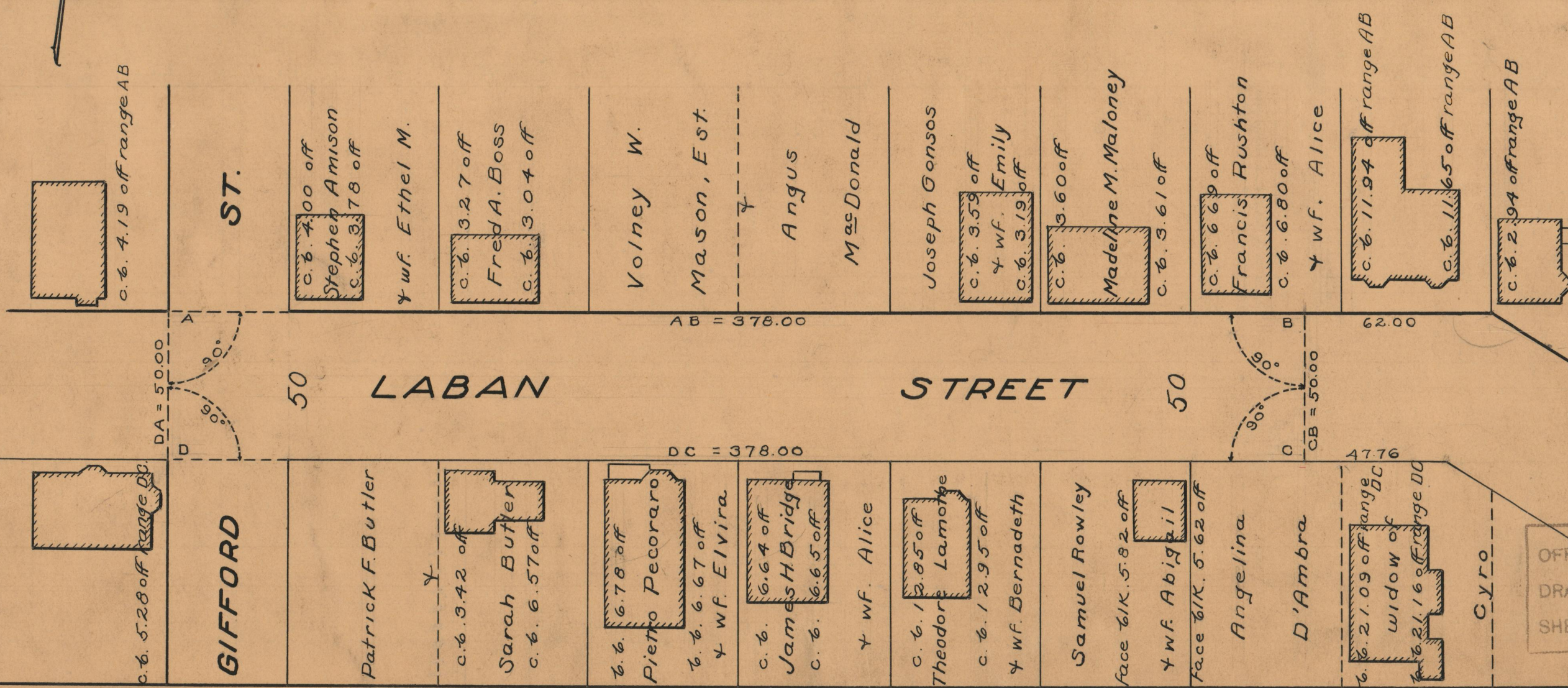
Dec. 14, 1932

054770

PLAT OF LABAN STREET

FROM THE WESTERLY LINE OF GIFFORD ST. TO THE SUMMIT IN GRADE ABOUT 338 FEET EAST OF GIFFORD ST.
BOARD OF ALDERMEN
SEPTEMBER 15, 1932.

SCALE 1" = 40'



c.b. 4.19 off range AB

ST.

c.b. 4.00 off
Stephen Amison
c.b. 3.78 off

Y wf. Ethel M.

c.b. 3.27 off
Fred A. Boss
c.b. 3.04 off

Volney W.

Mason, Est.

Angus

McDonald

Joseph Gonsos

c.b. 3.59 off
Y wf. Emily
c.b. 3.19 off

c.b. 3.60 off

Madeline M. Maloney

c.b. 3.61 off

c.b. 6.69 off
Francis Rushton

c.b. 6.80 off

Y wf. Alice

c.b. 11.94 off range AB

c.b. 11.65 off range AB

c.b. 2.94 off range AB

DA = 50.00

50

LABAN

AB = 378.00

STREET

50

CB = 50.00

62.00

c.b. 5.28 off range DC

GIFFORD

Patrick F. Butler

c.b. 3.42 off
Sarah Butler
c.b. 6.57 off

c.b. 6.78 off
Pietro Pecoraro
c.b. 6.67 off
Y wf. Elvira

c.b. 6.64 off
James H. Bridge
c.b. 6.65 off

Y wf. Alice

c.b. 12.85 off
Theodore Lamotte
c.b. 12.95 off
Y wf. Bernadeth

Samuel Rowley

face 1/2 K. 5.82 off

Y wf. Abigail

face 1/2 K. 5.62 off

Angelina

D'Ambra

c.b. 2.109 off range DC
widow of
c.b. 2.16 off range DC

CYRO

47.76

OFFICE No.	25859
DRAWER	87
SHEET	A-56