

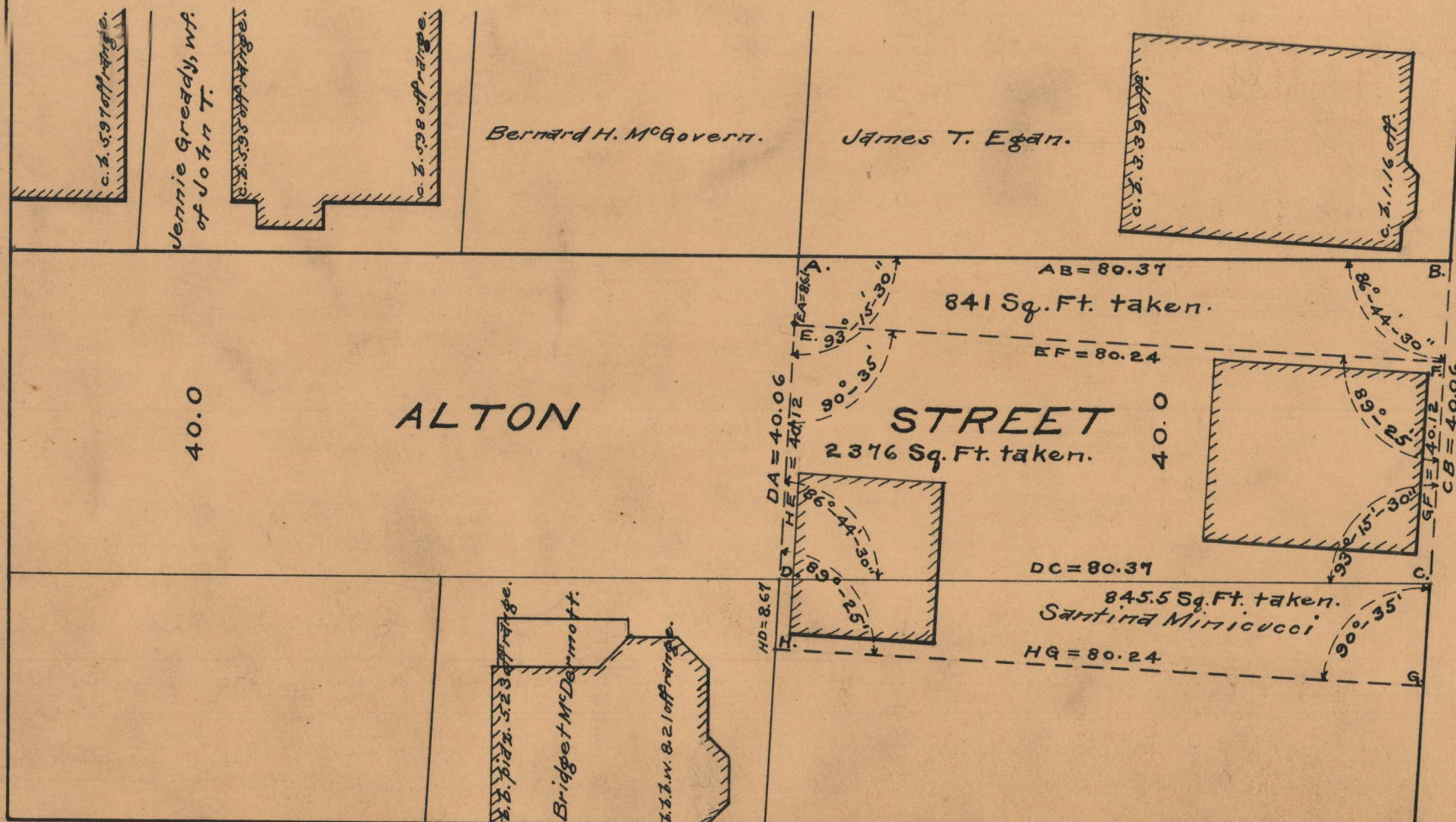
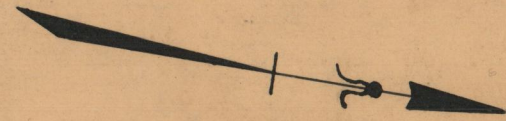
PROVIDENCE, R.I.
CITY ENGINEER'S OFFICE
STREET LINE DEPT.

October 20, 1932

054711

PLAT OF
ALTON STREET
FROM ITS NORTHERLY TERMINATION TO ANDEM ST.
BOARD OF ALDERMEN
APRIL 6, 1935.

SCALE 1" = 20'



ST.

GENEVA ST.

ANDEM

OFFICE No.	25833
DRAWN BY	87
SHEET	A-48