

PROVIDENCE, R.I.
CITY ENGINEER'S OFFICE
STREET LINE DEPT.

Sept. 30, 1932.

054697

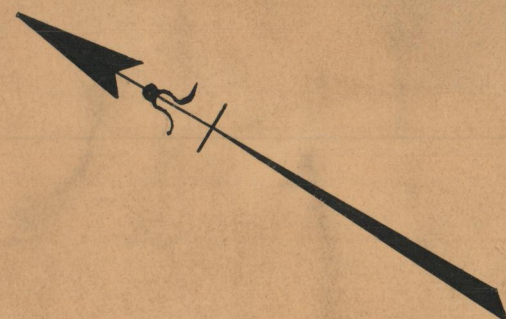
PLAT OF

BAILEY COURT

FROM CHAFFEE ST. TO ITS SOUTHERLY TERMINATION
BOARD OF ALDERMEN
SEPTEMBER 15, 1932.

SCALE 1" = 30'

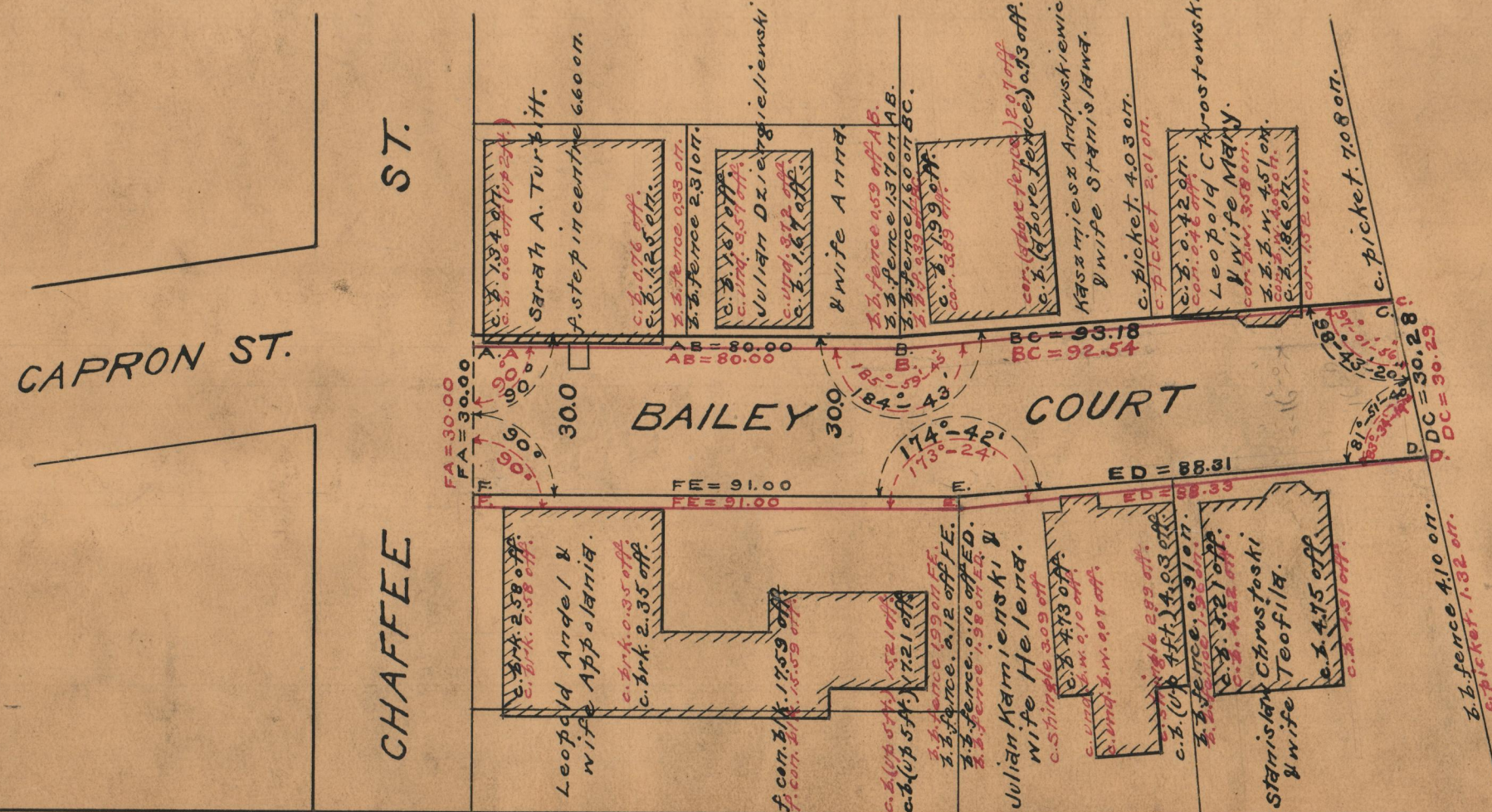
NOTE:- Red lines and figures show corrections made to correct a two (20) foot error made on the John O. Waterman plat recorded on Card 540 which shows lot at the South-west corner of Chaffee and Appleton streets 50 feet on Chaffee Street, whereas the original plat on Card 356 shows 52 feet on Chaffee Street.



172.54
179.33

351.87
175.935 ✓

Use Red Figures



OFFICE No. 25830
DRAWER 87
SHEET A-46