

PROVIDENCE, R.I.
CITY ENGINEER'S OFFICE
STREET LINE DEPT.

September 30, 1932.

054689

PLAT OF ALTHEA STREET

FROM HUNTINGTON AVE. TO UNION AVE.

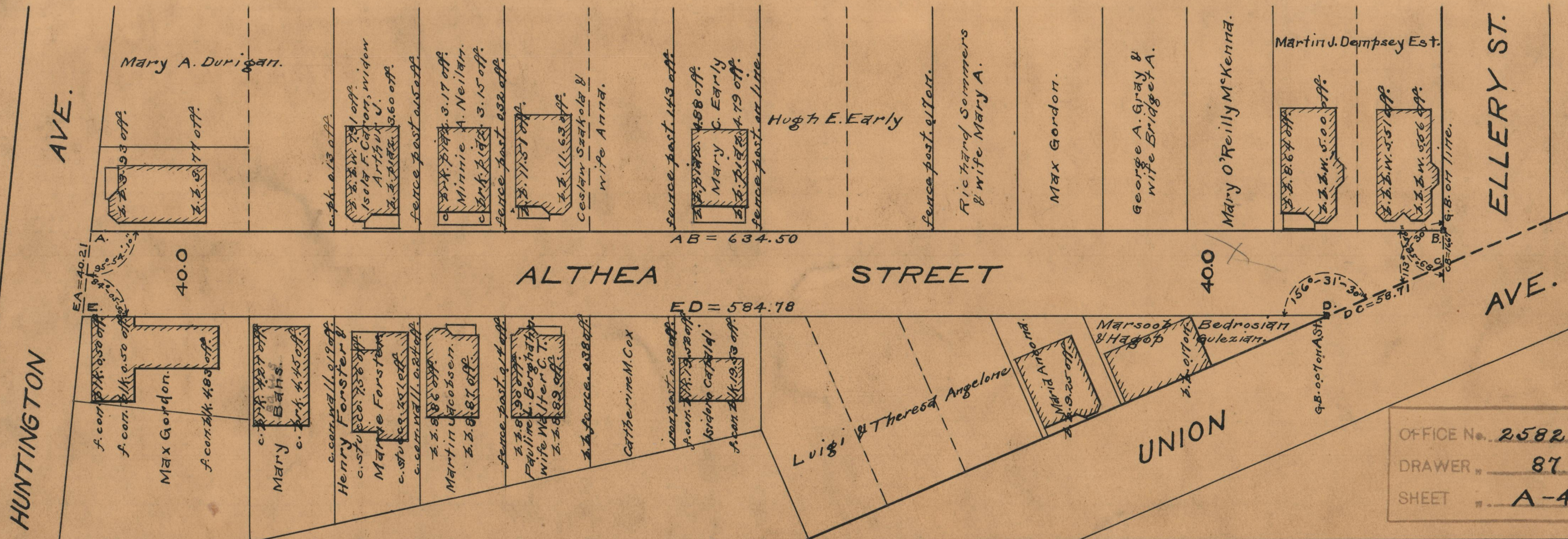
BOARD OF ALDERMEN

OCTOBER 20, 1932.

SCALE 1" = 50'



634.50
584.78
21219.28
609.67



OFFICE No.	25826
DRAWER	87
SHEET	A-43