

PROVIDENCE, R.I.  
CITY ENGINEER'S OFFICE  
STREET LINE DEPT.

September 30, 1932.

054688

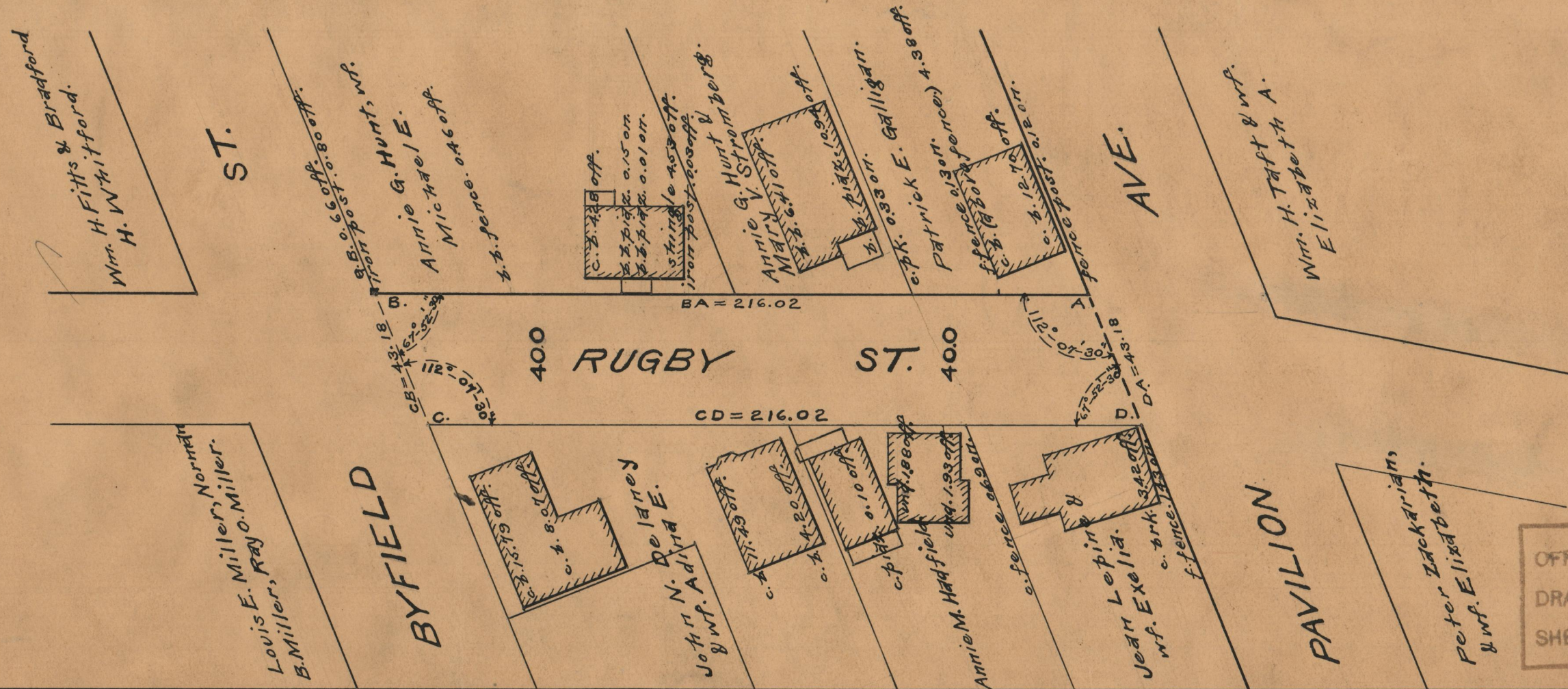
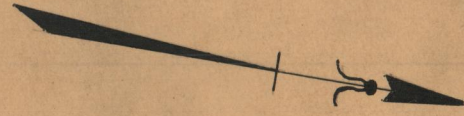
# PLAT OF RUGBY STREET

FROM PAVILION AVE. TO BYFIELD ST.

BOARD OF ALDERMEN

OCTOBER 20, 1932

SCALE 1" = 40'



OFFICE No.	25825
DRAWER	87
SHEET	A-42