

PROVIDENCE, R.I.  
CITY ENGINEER'S OFFICE  
STREET LINE DEPT.  
August 19, 1932  
054582

NOTE  
Area condemned for Highway  
purposes is indicated by the  
letters A-B-C-D-E-F-G-H-A.

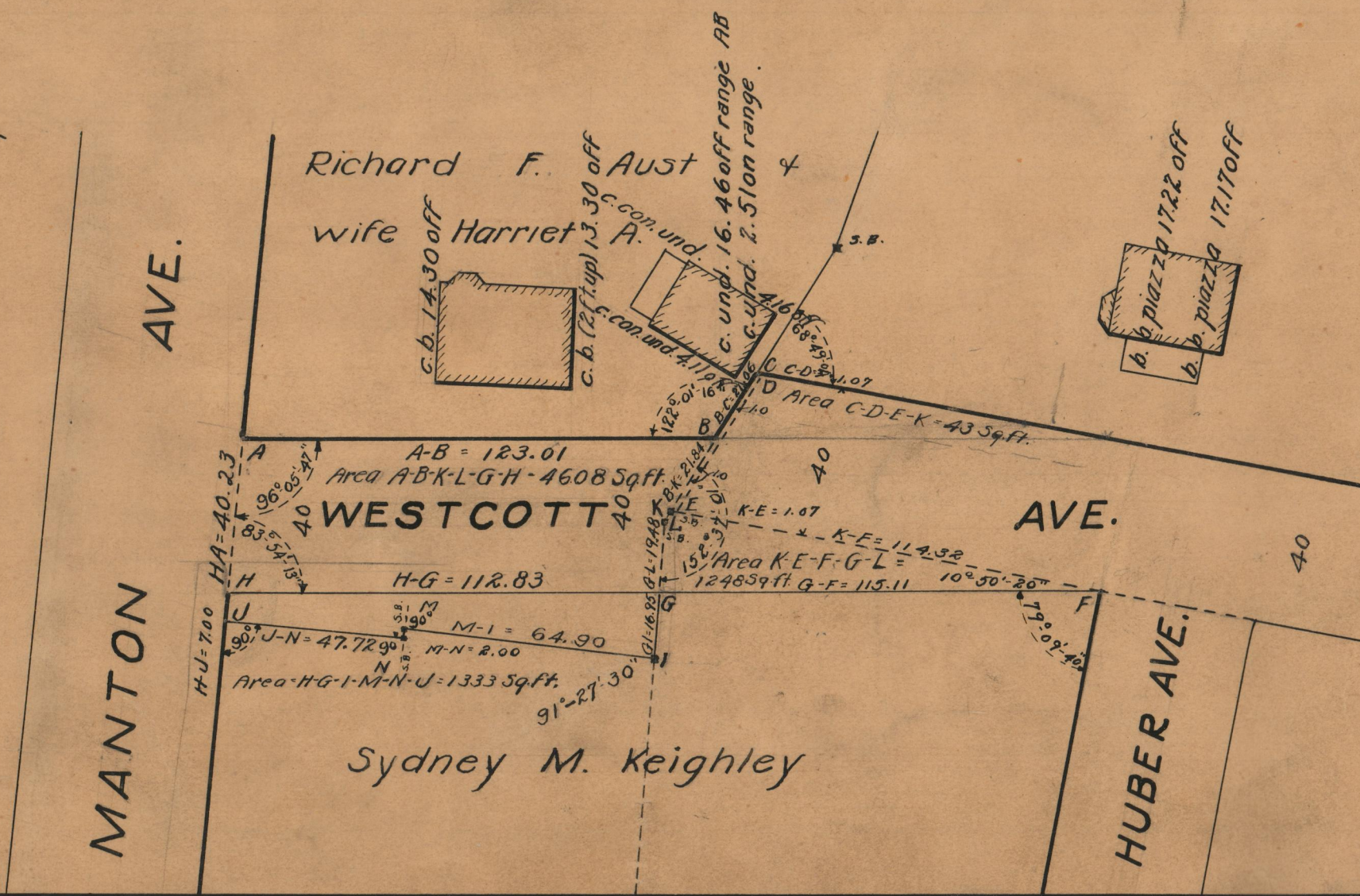
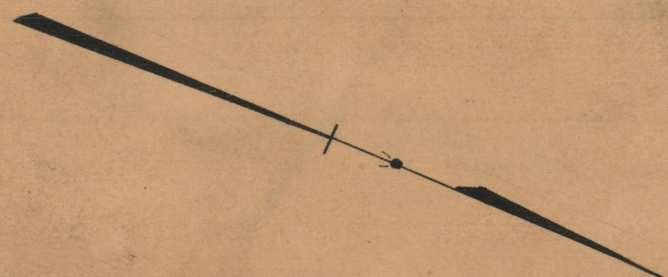
# PLAT OF WESTCOTT AVENUE

FROM  
MANTON AVE. TO HUBER AVE.  
JOINT RESOLUTION OF THE CITY COUNCIL

SEPTEMBER 18, 1931

Scale 1" = 40'

123.01  
112.83  
115.11  
2350.95  
175.475



OFFICE No.	25808
DRAWER	87
SHEET	A-41