

SHEET ONE

PLAT OF SOCIAL STREET

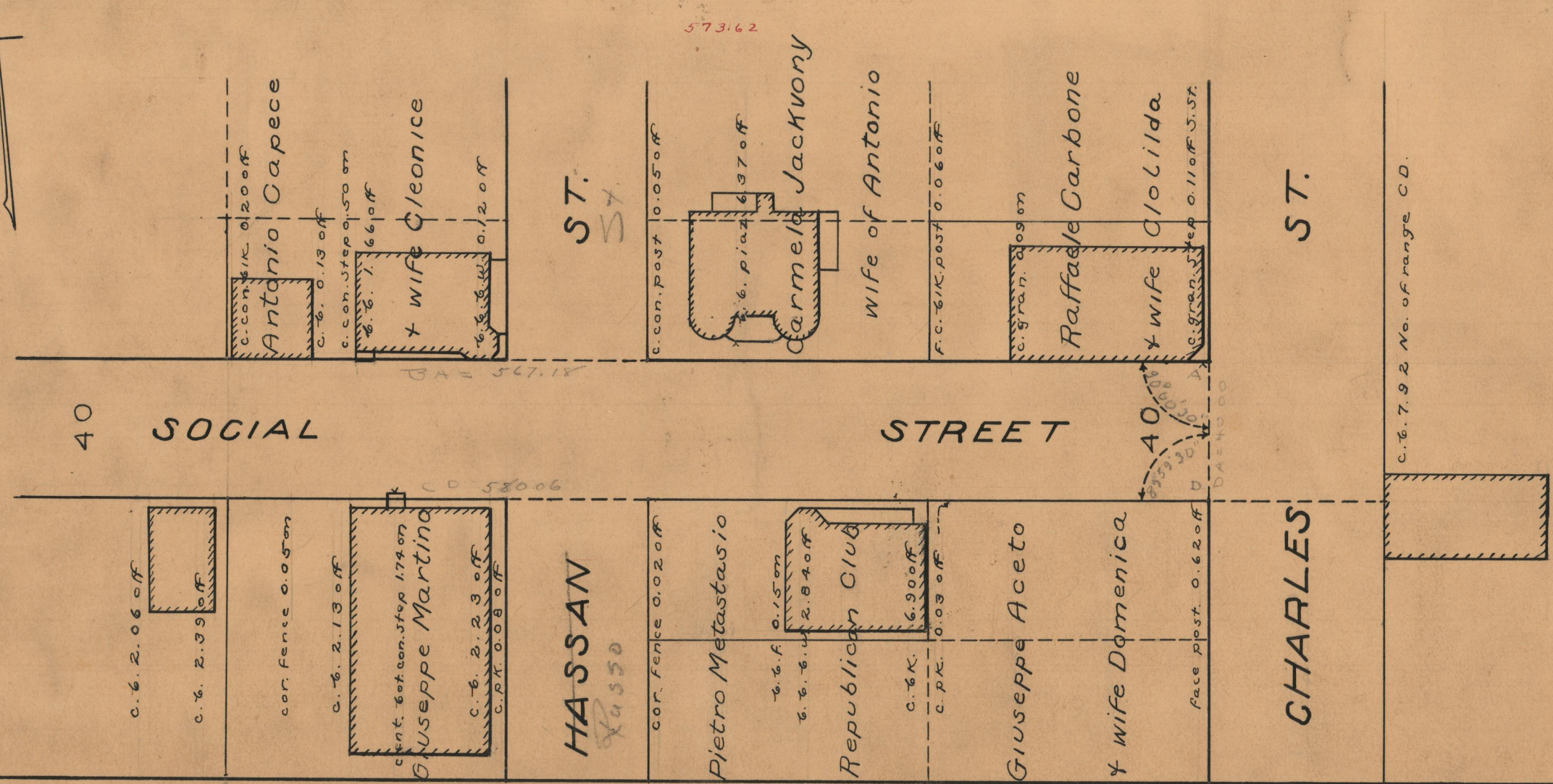
IN TWO SHEETS
FROM CHARLES ST. TO AVENTINE AVE.
BOARD OF ALDERMEN
JUNE 16, 1932.

PROVIDENCE, R.I.
CITY ENGINEER'S OFFICE
STREET LINE DEPT.

June 17, 1932

054570

SCALE 1" = 40'



OFFICE No.	25989
DRAWER	87
SHEET	A-38