

scale 40'

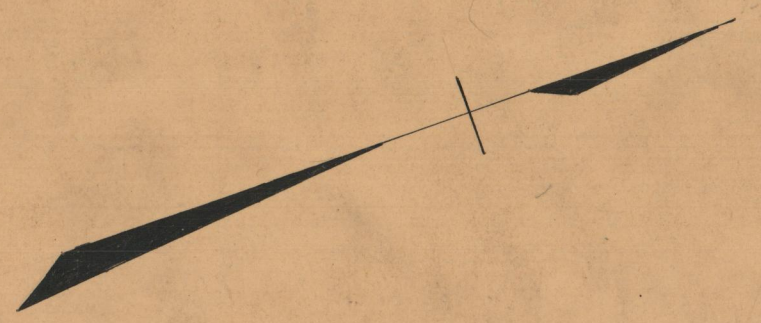
PROVIDENCE, R.I.  
CITY ENGINEER'S OFFICE  
STREET LINE DEPT.  
June 17, 1932  
054564

# PLAT OF AVENTINE AVENUE

FM THE SOUTHERLY LINE OF GREELEY ST. TO PAUL ST.

IN TWO SHEETS

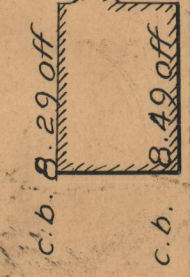
BOARD OF ALDERMEN



Onorato Colletti

GREELEY

Domenico Di Meo & wf. Mariantonia

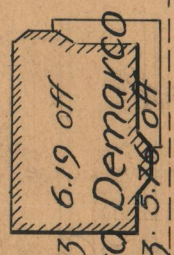


b.b.f. 0.520n  
b.b.f. 0.420n



Francesco Pescarini  
& wf. Maria

b.b.f. 0.41 off



Domenico Demarco  
& wf. Carmela

b.b.f. 0.840n

SOCIAL

cor. post 0.120n

40

AVENTINE AVENUE

40

40

ST.

c.p.k. 0.39 off

Raffaele Votta  
& wf. Pasqualina

b.b.f. 0.320n  
b.b.f. 0.500n

Joseph L. Pilkington  
& wf. Nellie T.

648.08  
680.48  
1828.56  
664.28

Anna Marchione  
widow of Antonio

b.f. 1.200n  
b.b. 2.970ff

b.b.f. 1.270n

Vito Taccone  
& wf. Maria C.

b.b.f. 1.300n

c.b. 4.950ff

c.b. 4.840ff

c.p.k. 0.100n

ST.

b.b.f. 0.420n

605.78  
638.18  
2) 1243.96  
621.98

25983

OFFICE No. 25983  
DRAWER 87  
SHEET A-32