

CHECK FOR
WIDEN 767
B-34 CCR 718
R.J.Q. APP Nov. 20, 1953

PLAT OF CUMBERLAND STREET

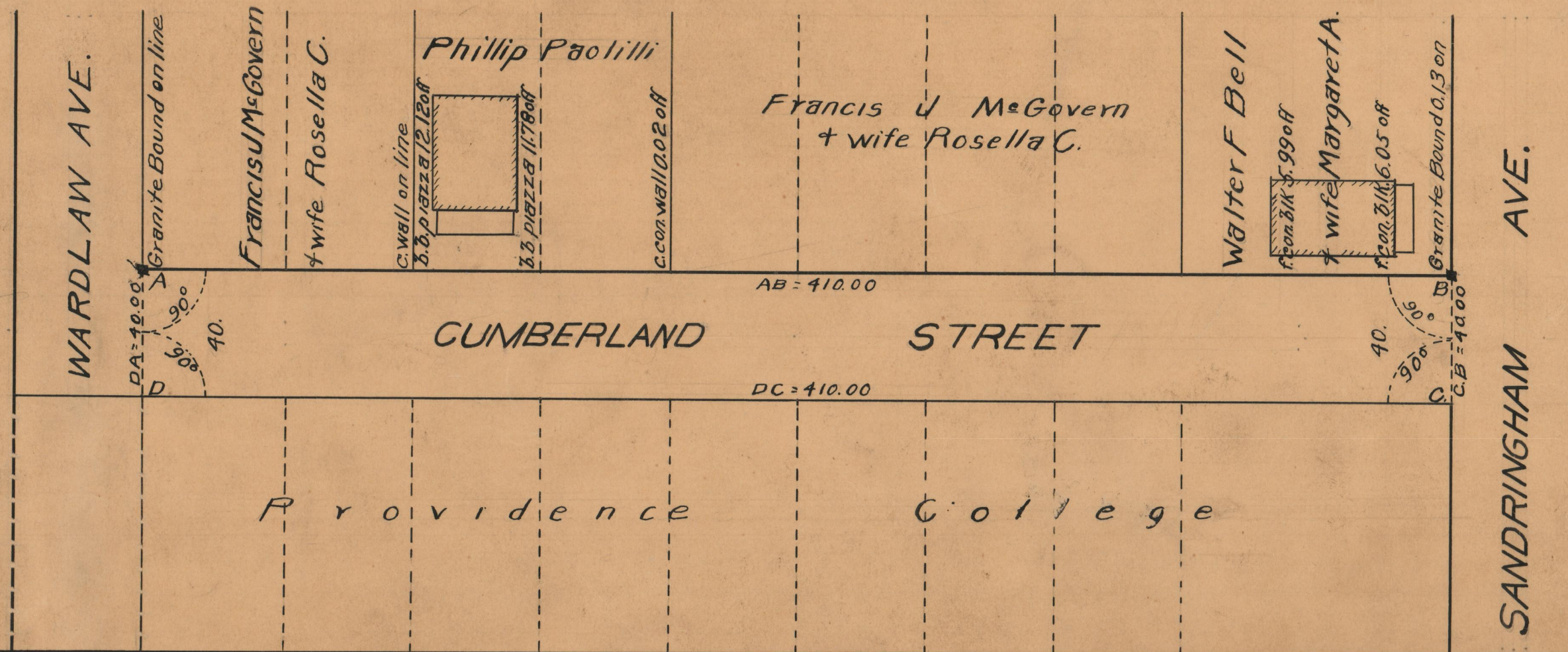
FROM WARDLAW AVE. TO SANDRINGHAM AVE.
BOARD OF ALDERMEN
APRIL 21, 1932.

PROVIDENCE, R.I.
CITY ENGINEER'S OFFICE
STREET LINE DEPT.
June 8, 1932
054532

SCALE 1"=40'



410.00



| | |
|------------|-------|
| OFFICE No. | 25977 |
| DRAWER | 87 |
| SHEET | A-31 |