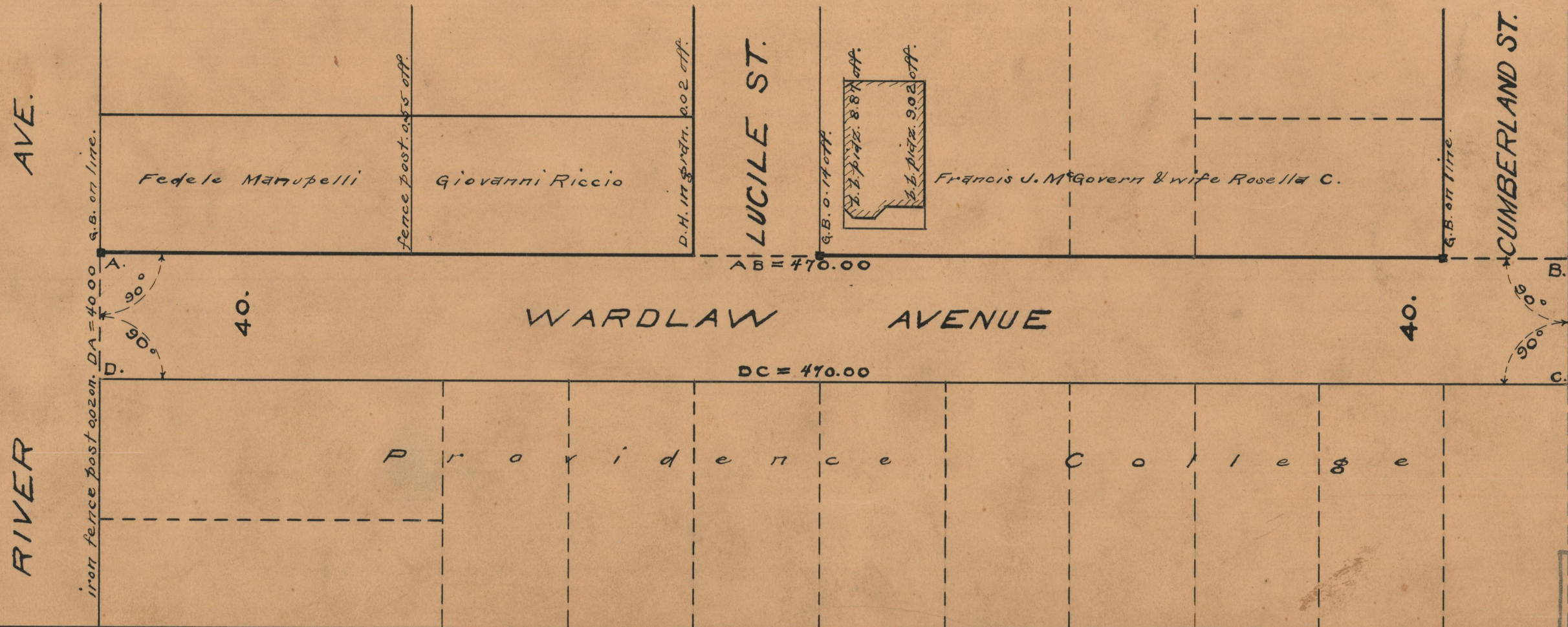


PLAT OF  
**WARDLAW AVENUE**  
 FROM RIVER AVE. TO RANGE OF EASTERLY LINE OF CUMBERLAND ST.  
 BOARD OF ALDERMEN  
 MAY 19, 1932.

PROVIDENCE, R.I.  
 CITY ENGINEER'S OFFICE  
 STREET LINE DEPT.  
 June 8, 1932  
054531

SCALE 1" = 40'



OFFICE No.	25976
DRAWER	87
SHEET	A-30