

PLAT OF

CATHEDRAL AVENUE

FROM MOUNT PLEASANT AVE. TO SMITH ST.

BOARD OF ALDERMEN

SEPTEMBER 15, 1932

SCALE 1" = 50'

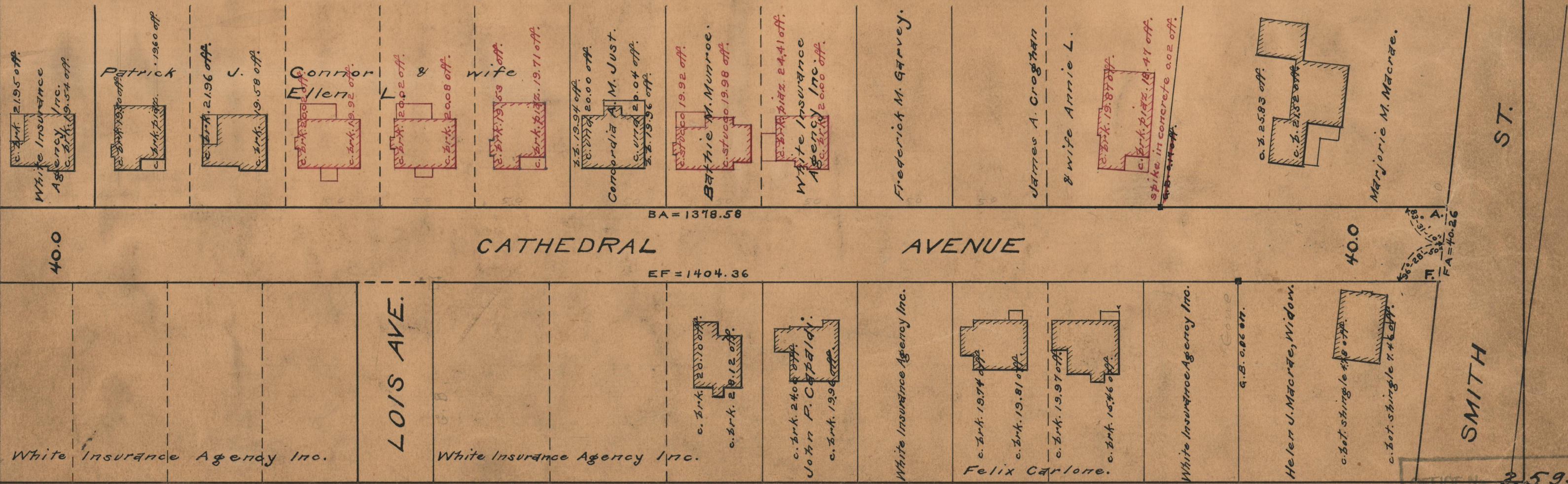
PROVIDENCE, R.I.
CITY ENGINEER'S OFFICE
STREET LINE DEPT.

Apr. 22, 1932

054463



489.36
1519.22
6518.00
1504.29



OFFICE NO. 25953
 DRAWER 87
 SHEET A-24