

PLAT OF
EDGEWOOD BOULEVARD

FROM CITY LINE TO ROGER WILLIAMS PARK
 IN THREE SHEETS
 BOARD OF ALDERMEN
 JANUARY 21, 1932.

PROVIDENCE, R.I.
 CITY ENGINEER'S OFFICE
 STREET LINE DEPT.

April 13, 1932

05440

SCALE 1"=50'

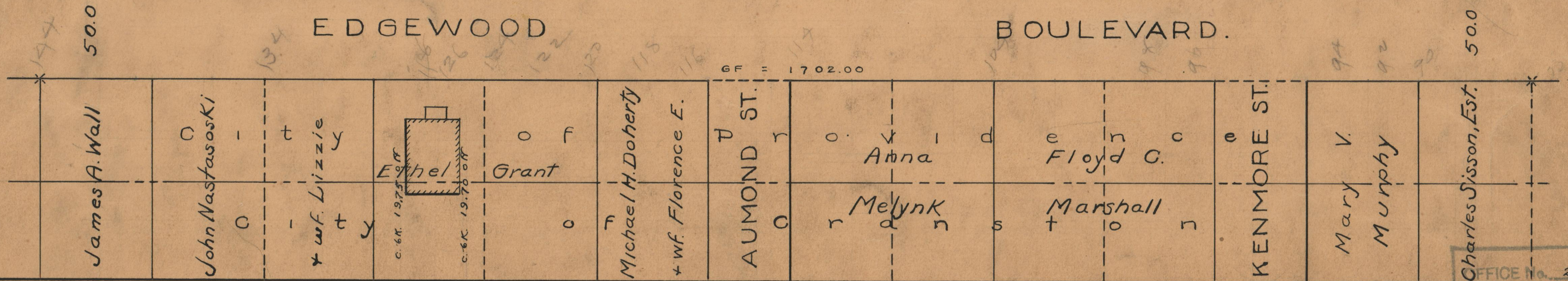
R o g e r W i l l i a m s P a r k

BC = 1720.69

EDGEWOOD

BOULEVARD.

GF = 1702.00



OFFICE No. 25936
 DRAWER " 87
 SHEET " A-22