

PLAT OF ELMCREST AVENUE

FROM
RECEIVED PORTION TO THE CITY LINE

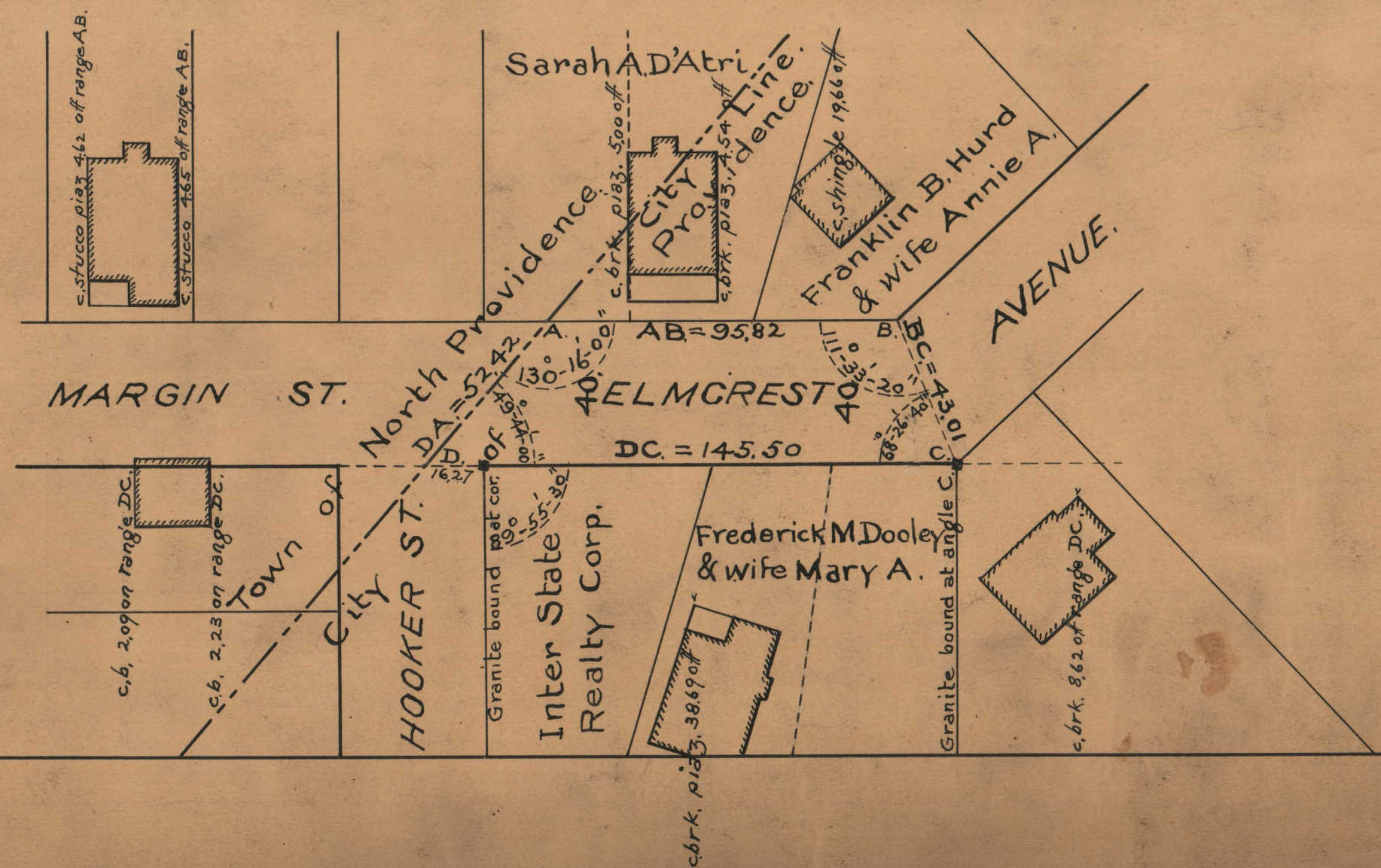
BOARD OF ALDERMEN

NOVEMBER 19, 1931

CITY ENGINEER'S OFFICE
STREET LINE DEPT.
Dec. 17, 1931.
054125

SCALE 40ft=1in.

95.82
145.50
2)241.32
120.66



87 A 2

OFFICE No. 25688
DRAWER 87
SHEET A-2