

PLAT OF WAVERLY STREET

FROM
HUNTINGTON AVE. TO ELLERY ST.

BOARD OF ALDERMEN

JANUARY 21, 1932

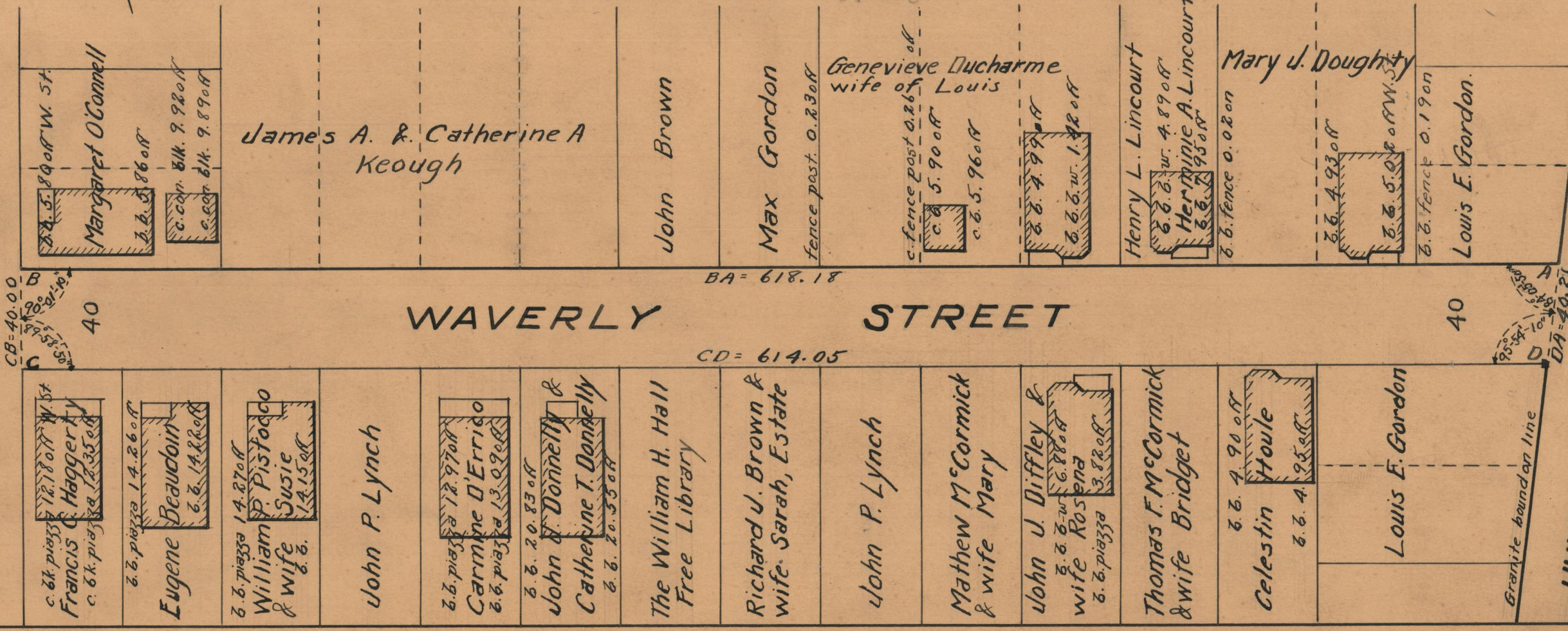
Scale 1" = 50'

618.18
614.05
1232.23
616.115
618.18
614.05
1232.23
616.115

Granite bound 0.07 of range

ST.

ELLERY



AVE.

HUNTINGTON

OFFICE No. 25745
 DRAWER " 87
 SHEET " A-14