

PLAT OF LYDIA STREET

FROM CANDACE ST. TO DOUGLAS AVE.

BOARD OF ALDERMEN

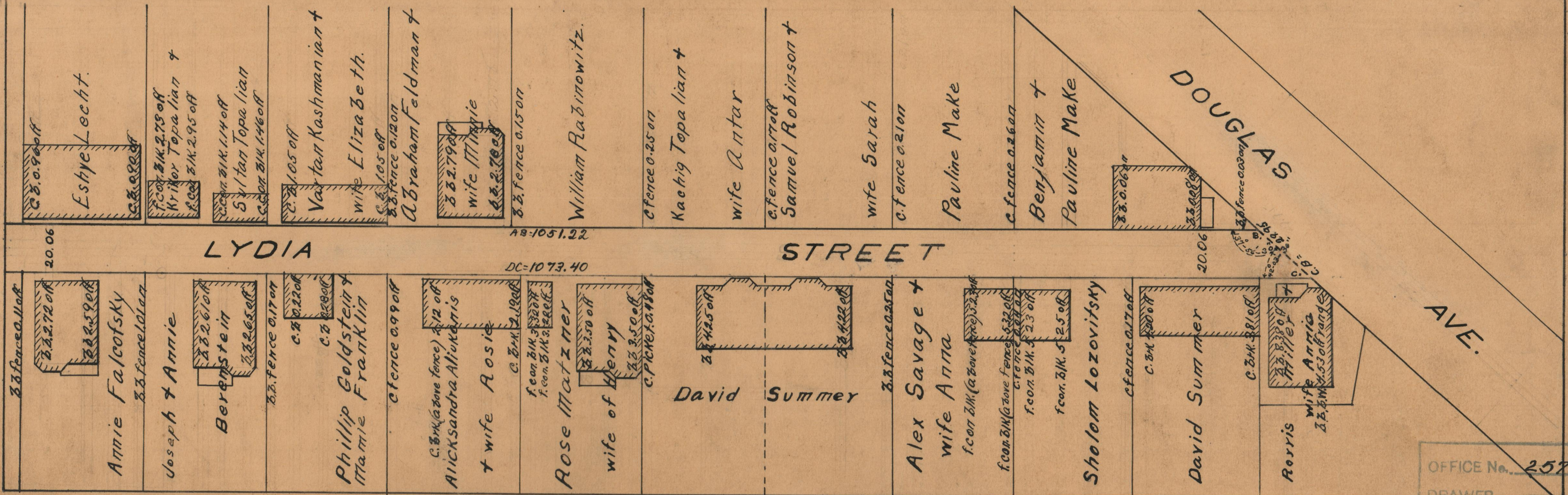
NOVEMBER 19, 1931.

SCALE 1"=40'

CITY ENGINEER'S OFFICE
STREET LINE DEPT.

January 11, 1932

054196



OFFICE No. 25729
 DRAWER 87
 SHEET A-11