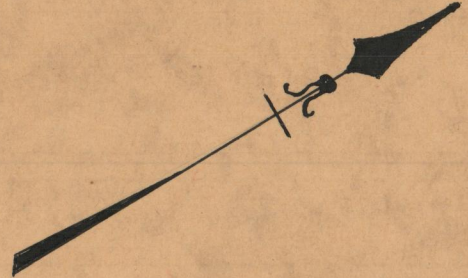


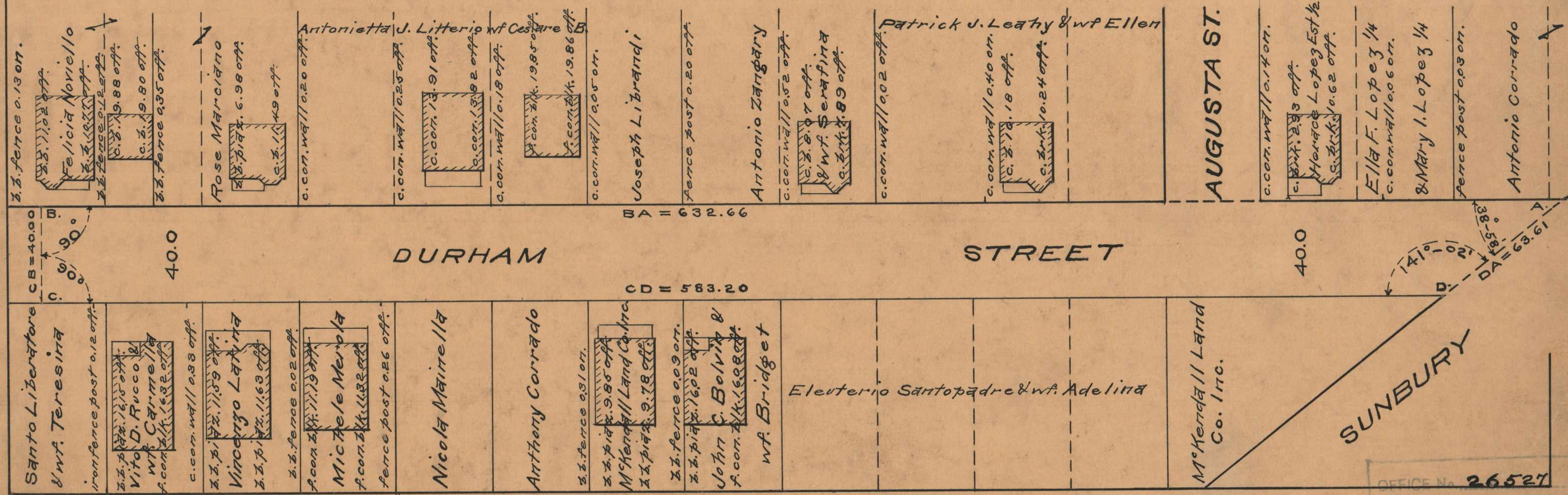
PLAT OF
DURHAM STREET
FROM SUNBURY ST. TO THE PORTION ALREADY
RECEIVED 186 FT. NLY. FROM ADMIRAL ST.
BOARD OF ALDERMEN
MAY 16, 1935.

PROVIDENCE, R.I.
CITY ENGINEER'S OFFICE
STREET LINE DEPT.
Jan. 25, 1936
056618

SCALE 40' = 1"



632.66
583.20
2)1215.86
607.93



OFFICE No. 26527
DRAWER " 87
SHEET " A-100