

# PLAT OF LYDIA STREET

FROM CANDACE ST. TO DOUGLAS AVE.  
BOARD OF ALDERMEN  
NOVEMBER 19, 1931.

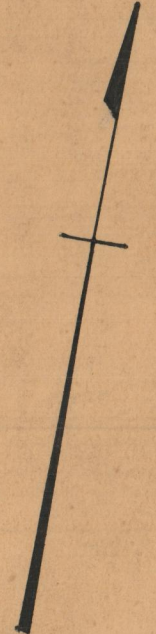
SCALE 1" = 40'

CITY ENGINEER'S OFFICE  
STREET LINE DEPT.

January 11, 1932

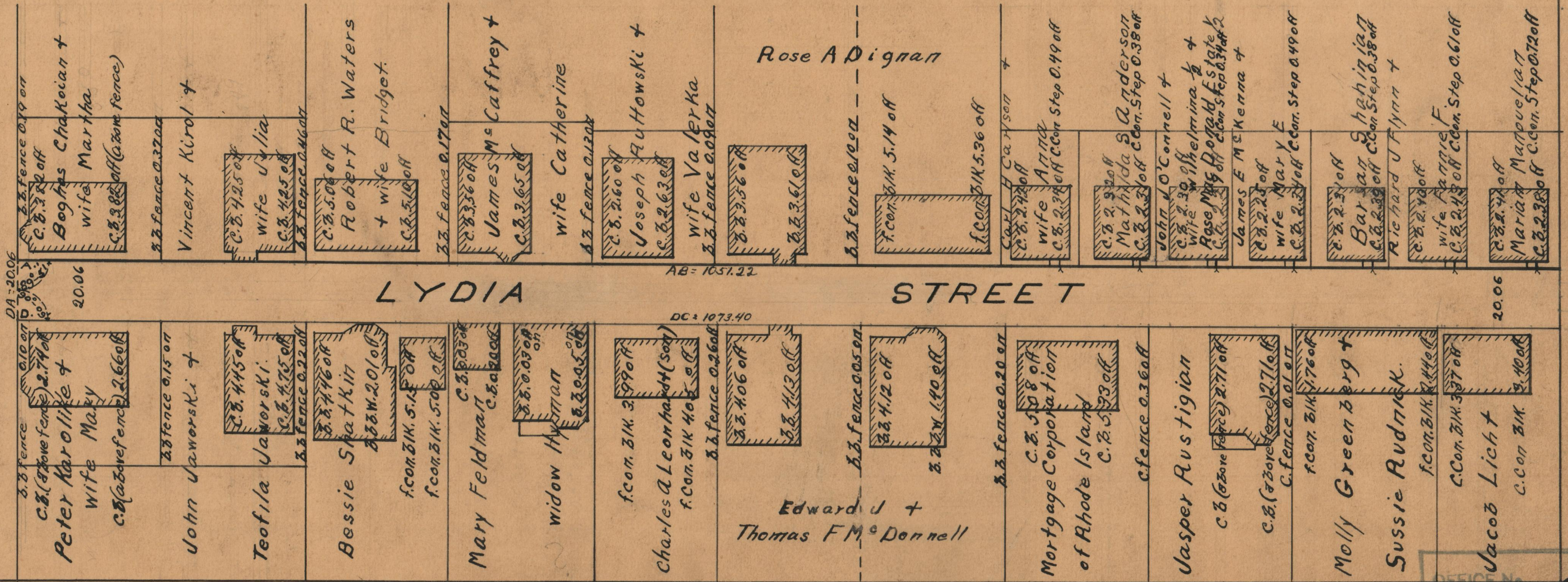
054195

1051.22  
1073.40  
2124.62  
1062.31



CANDACE ST.

LYDIA STREET



87  
A-10

OFFICE No.	25728
DRAWER	87
SHEET	A-10