

PLAT OF SANDRINGHAM AVENUE

PROVIDENCE, R.I.
CITY ENGINEER'S OFFICE

STREET LINE DEPT.
Oct. 28, 1931.

054037

IN TWO SHEETS

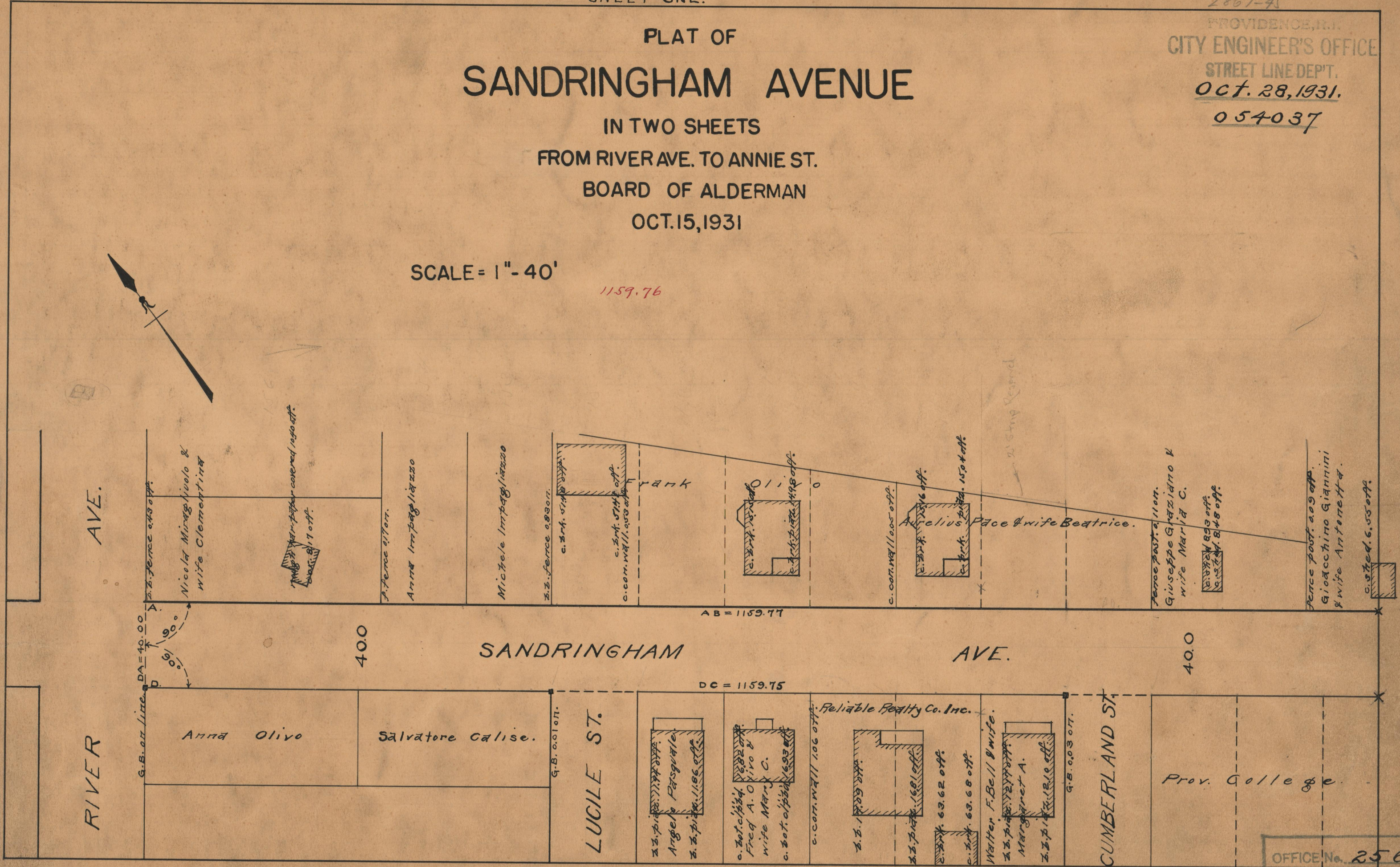
FROM RIVER AVE. TO ANNIE ST.

BOARD OF ALDERMAN

OCT. 15, 1931

SCALE = 1" = 40'

1159.76



AVE.

RIVER

Nicola Miragiuolo &
wife Clementina

DA = 40.00
90°
90°

Anna Olivo

Handwritten note: *Handwritten note: paper covered 1930 off.*

40.0

Anna Impagliazzo

Salvatore Calise.

Michele Impagliazzo

SANDRINGHAM AVE.

LUCILE ST.

Frank

AB = 1159.77

Angelo Fasquale

Fred A. Olivo &
wife Mary C.

Reliable Realty Co. Inc.

Arclius Pace & wife Beatrice.

AVE.

Walter F. Bell & wife
Margaret A.

Giuseppe Graziano &
wife Maria C.

CUMBERLAND ST.

Handwritten note: *Handwritten note: 1930 off.*

Prov. College.

Handwritten note: *Handwritten note: 1930 off.*

OFFICE No. 25648
DRAWER 86
SHEET C-88