

T. F. C. 2766-136-7
 PROVIDENCE, R.I.
 CITY ENGINEER'S OFFICE
 STREET LINE DEPT.
 Oct. 28, 1931.
 054035

PLAT OF
MECHANICS AVENUE

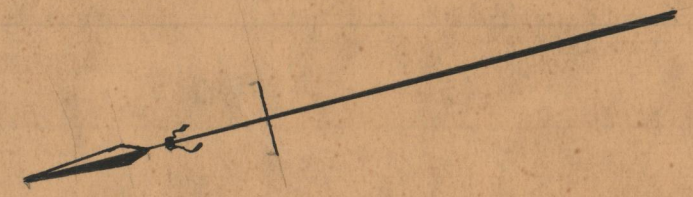
FROM LIVINGSTON ST. TO DRYDEN LANE

CITY COUNCIL RESOLUTION

APRIL 21, 1941

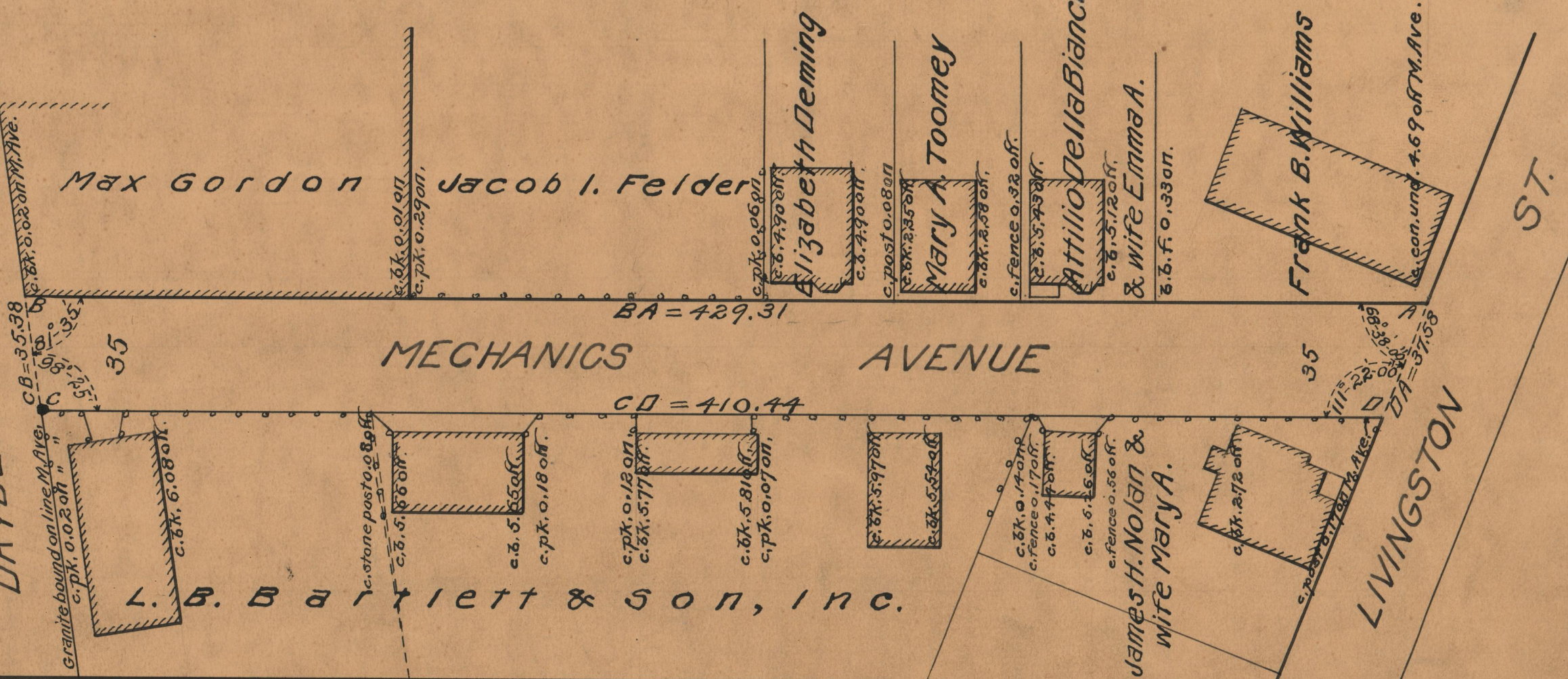
429.31
 410.44
 2839.75
 419.875

Scale 1"=40'



LANE

DRYDEN



OFFICE No. 25646
 DRAWER " 86
 SHEET " C-86