

SHEET TWO

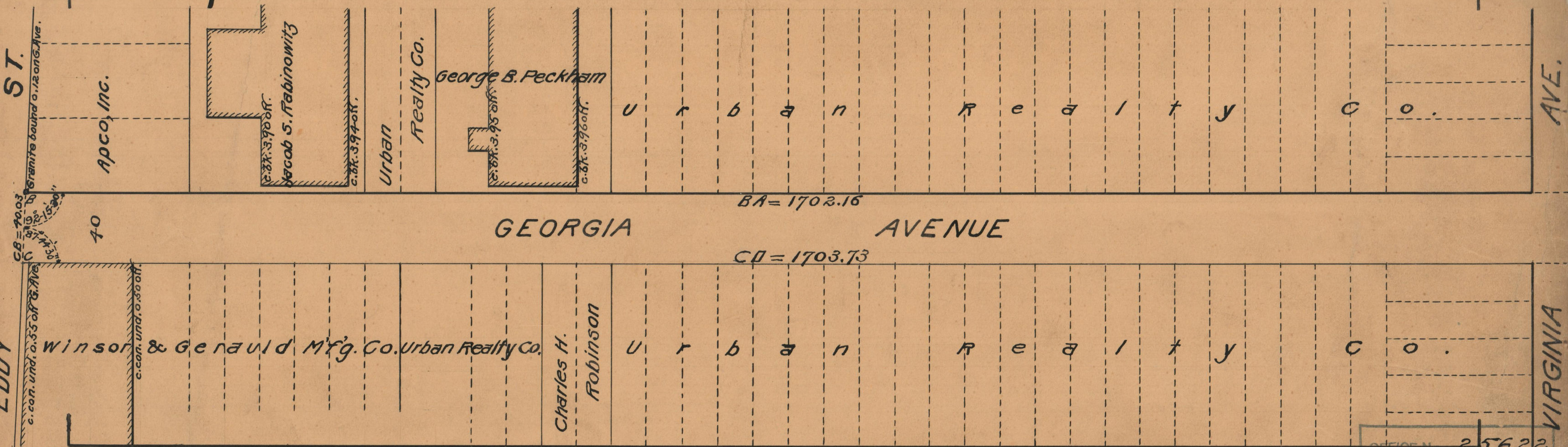
G.W.S. 2690-10727.

PLAT OF GEORGIA AVENUE

IN TWO SHEETS
FROM ALLENS AVE. TO EDDY ST.
BOARD OF ALDERMEN
SEPTEMBER 18, 1930.

SCALE 1" = 50'

PROVIDENCE, R.I.
CITY ENGINEER'S OFFICE
STREET LINE DEPT.
Aug. 24, 1931.
053943



OFFICE No. 25622
 DRAWER, 86
 SHEET " C-76