

# PLAT OF GEORGIA AVENUE

IN TWO SHEETS  
FROM ALLENS AVE. TO EDDY ST.  
BOARD OF ALDERMEN  
SEPTEMBER 18, 1930.

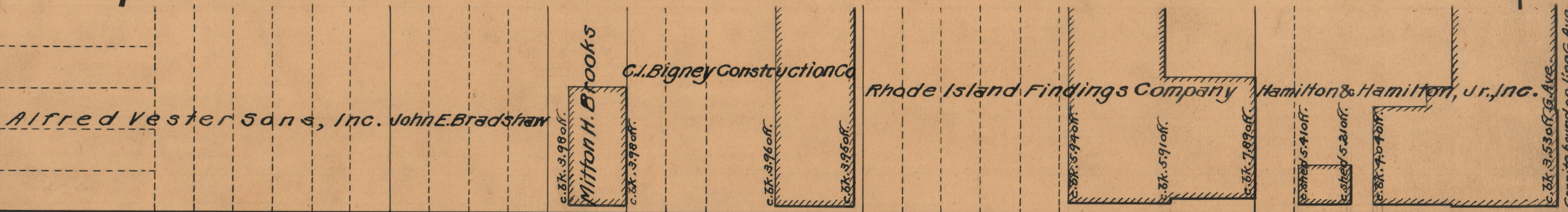
PROVIDENCE, R.I.  
CITY ENGINEER'S OFFICE  
STREET LINE DEPT.  
*Aug. 24, 1931*  
053942

SCALE 1" = 50'



1702.16  
1703.73  
23405.89  
1702.945

VIRGINIA AVE.



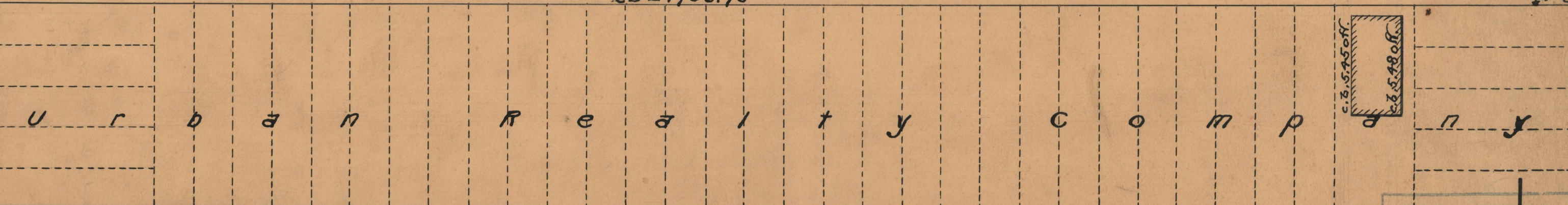
ALLENS AVE.

GEORGIA AVENUE

BA = 1702.16

CD = 1703.73

VIRGINIA



ALLENS

OFFICE No. 25621  
DRAWER " 86  
SHEET " C-75