

PLAT OF CAROLINA AVENUE

IN TWO SHEETS
FROM EDDY ST. TO ALLENS AVE.
BOARD OF ALDERMEN
JUNE 18, 1931.

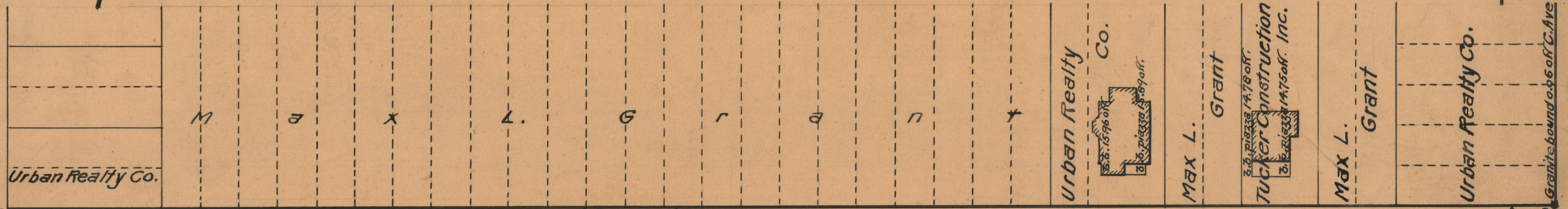
PROVIDENCE, R.I.
CITY ENGINEER'S OFFICE
STREET LINE DEPT.
Aug. 17, 1931.
053935

SCALE 1" = 50'



Granite bound on line C. Ave.

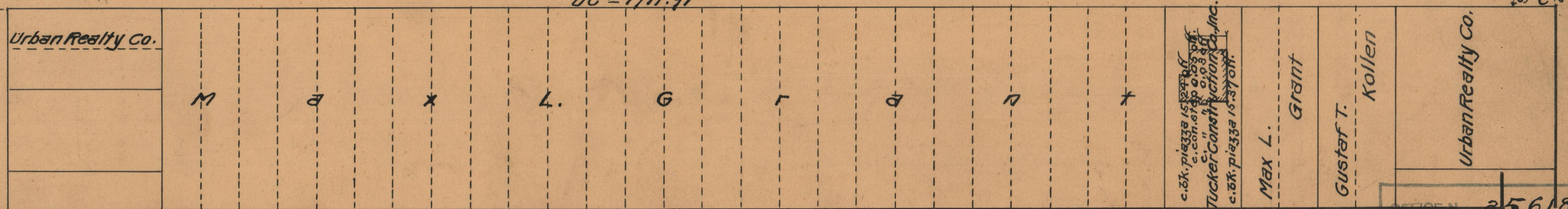
AVE.



CAROLINA AVENUE

DC = 1711.91

VIRGINIA



OFFICE NO. 35618
 DRAWER 86
 SHEET C-74