

SHEET ONE

G.W.S. 2690-11713

PLAT OF CAROLINA AVENUE

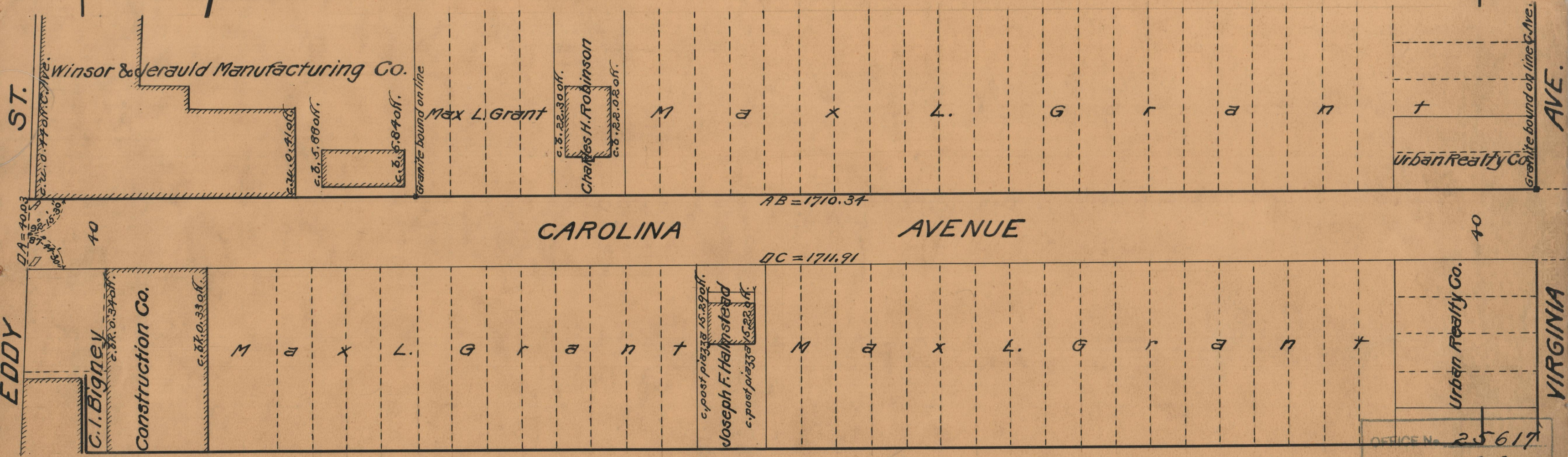
IN TWO SHEETS
FROM EDDY ST. TO ALLENS AVE.
BOARD OF ALDERMEN
JUNE 18, 1931.

PROVIDENCE, R.I.
CITY ENGINEER'S OFFICE
STREET LINE DEPT.
Aug. 17, 1931.
053934

SCALE 1" = 50'



1710.34
1711.91
2/3422.25
1711.125



OFFICE No. 25617
DRAWER " 86
SHEET " C-73