

PLAT OF

# CHAUCER STREET

FROM CARLETON ST. TO LEAH ST.

IN TWO SHEETS

BOARD OF ALDERMEN

JUNE 18, 1931

L. P. R. 2831-57-9

PROVIDENCE, R. I.  
CITY ENGINEER'S OFFICE

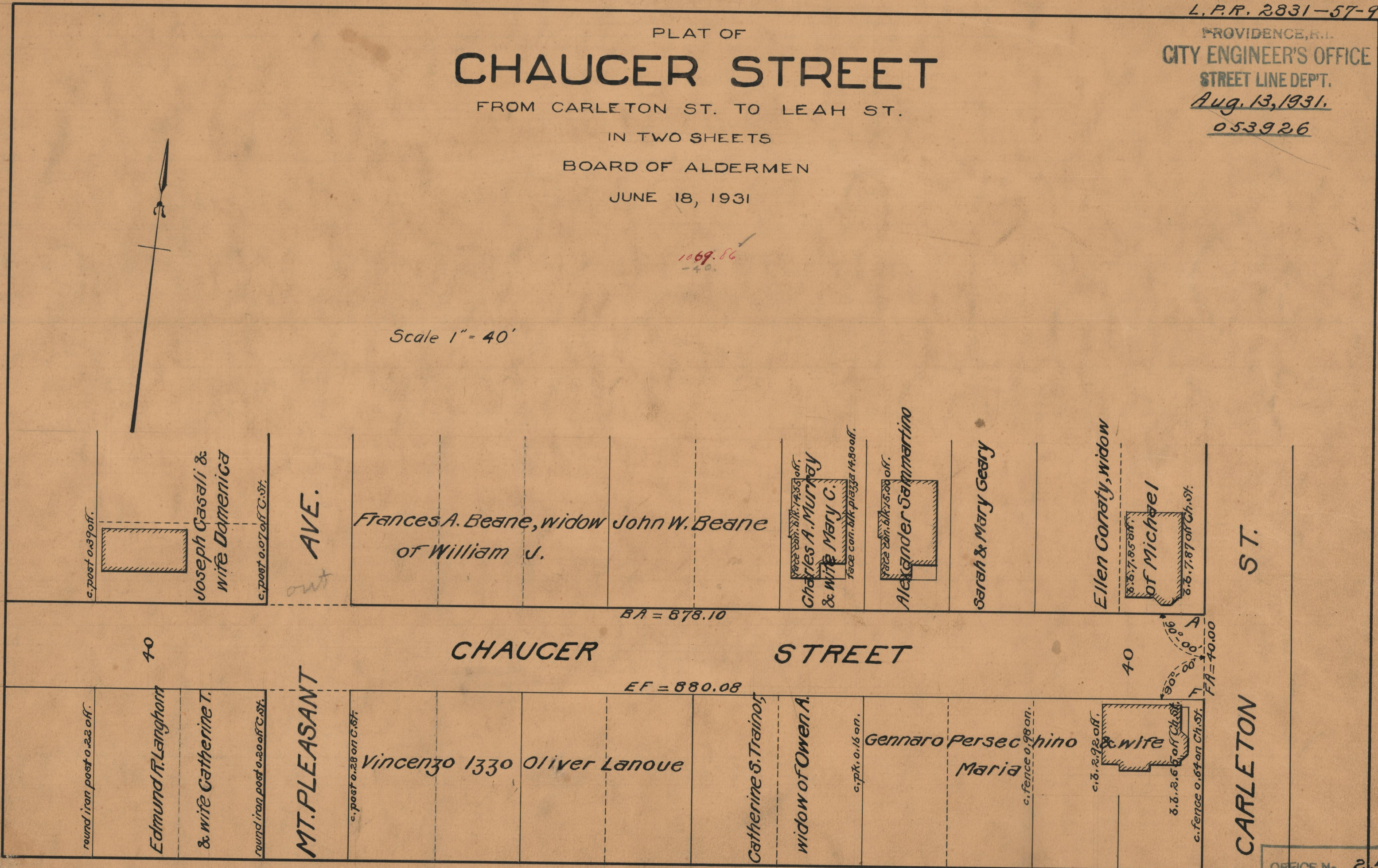
STREET LINE DEPT.

Aug. 13, 1931.

053926

1069.86  
-40

Scale 1" = 40'



c. post 0.39 off.

Joseph Casali &  
wife Domenica

c. post 0.07 off C. St.

AVE.

Frances A. Beane, widow John W. Beane  
of William J.

Charles A. Murray  
& wife Mary C.

face con. blk. piazza 14.80 off.

Alexander Sammartino

Sarah & Mary Geary

Ellen Coratly, widow

of Michael

c. b. 7.85 off.

c. b. 7.87 off Ch. St.

BA = 878.10

40

## CHAUCER STREET

40

EF = 880.08

round iron post 0.22 off.

Edmund R. Langhorn

& wife Catherine T.

round iron post 0.20 off C. St.

MT. PLEASANT

c. post 0.28 on C. St.

Vincenzo 1330 Oliver Lanoue

Catherine S. Trainor,

widow of Owen A.

c. p.k. 0.16 on.

Gennaro Persecchino  
Maria

c. fence 0.98 on.

c. b. 2.92 off.

& wife

c. b. 2.61 off Ch. St.

c. fence 0.64 on Ch. St.

FA = 40.00

ST.

CARLETON

OFFICE No. 25611  
DRAWER, 86  
SHEET C-70