

G.W.S. 2867-30

PROVIDENCE, R.I.
CITY ENGINEER'S OFFICE

STREET LINE DEPT.

July 13, 1931.

053863

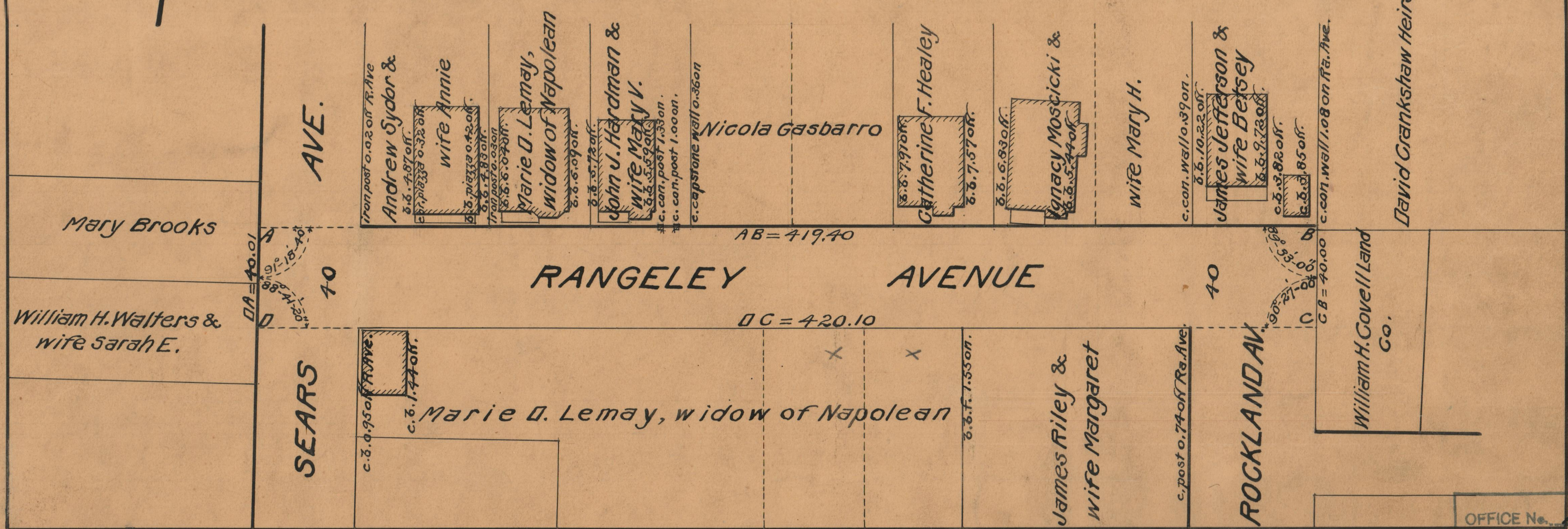
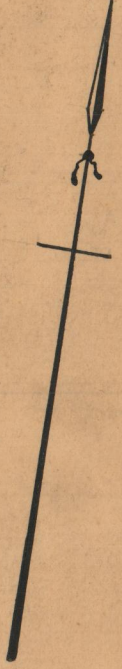
PLAT OF RANGELEY AVENUE

FROM THE WESTERLY LINE OF SEARS AVE. TO
THE EASTERLY LINE OF ROCKLAND AVE.
BOARD OF ALDERMEN

JUNE 18, 1931.

SCALE 1" = 40'

419.40
420.10
2 839.50
419.75



OFFICE No.	25589
DRAWER	86
SHEET	C-63