

G.W.S. 2867-29

PROVIDENCE, R.I.  
CITY ENGINEER'S OFFICE  
STREET LINE DEPT.  
July 13, 1931.

053862

# PLAT OF ROCKLAND AVENUE

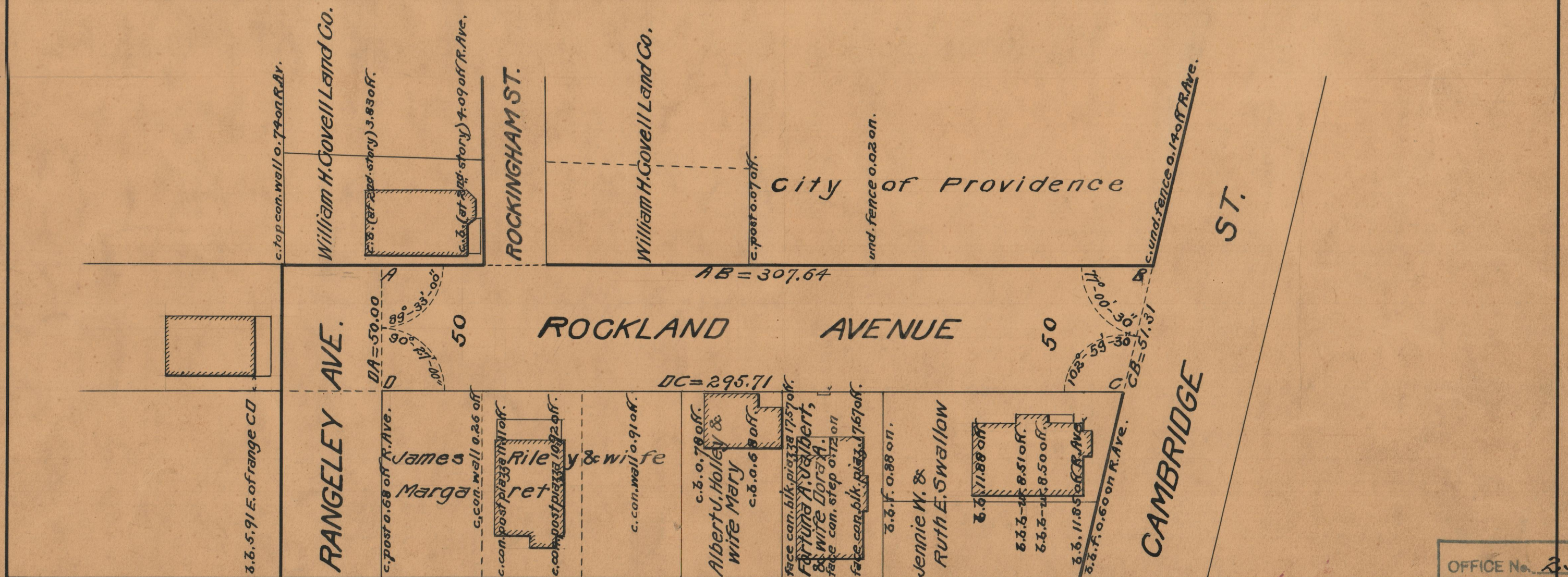
FROM RANGELEY AVE. TO CAMBRIDGE ST.

BOARD OF ALDERMEN

JUNE 18, 1931.

SCALE 1" = 40'

307.64  
295.71  
51.93  
2/600.05  
57.11



OFFICE No.	25588
DRAWER	86
SHEET	C-62