

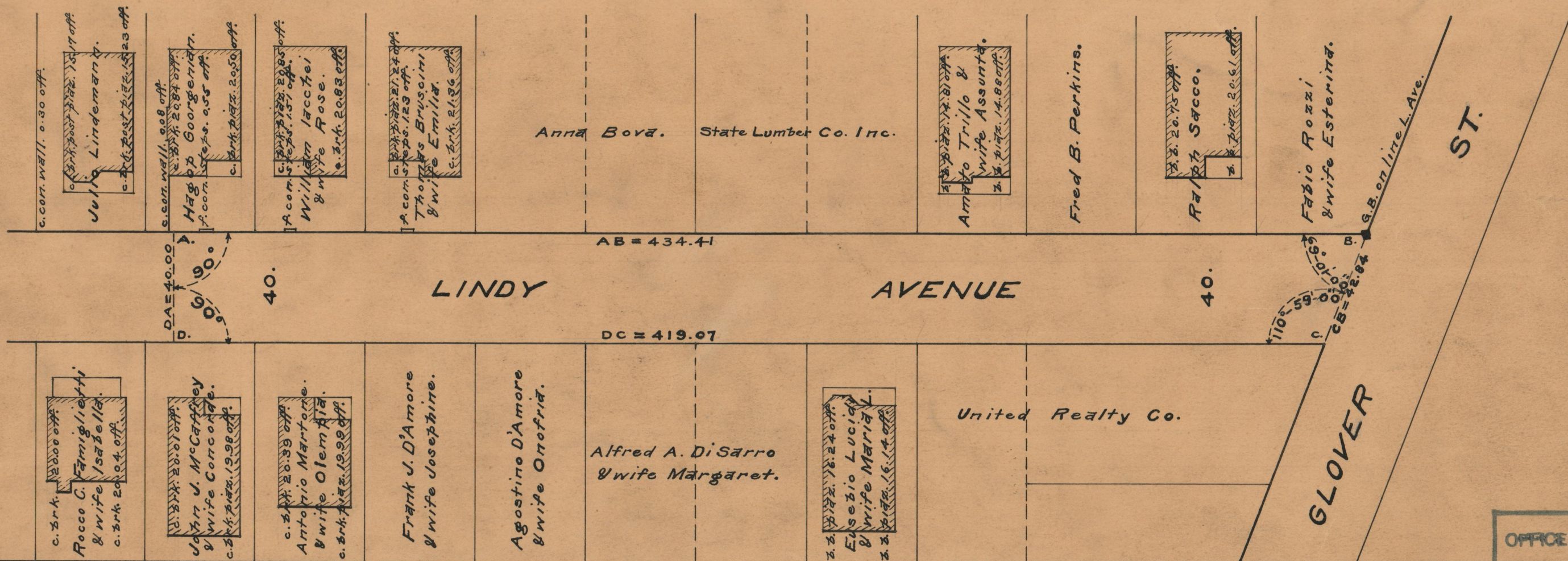
PROVIDENCE, R.I.
CITY ENGINEER'S OFFICE
STREET LINE DEPT.
June 26, 1931.

053828

PLAT OF
LINDY AVENUE
FROM PORTION RECEIVED NORTHERLY TO GLOVER ST.
BOARD OF ALDERMEN
MAY 21, 1931.

SCALE 1" = 40'

434.41
419.07
21853.48
426.74



OFFICE No. 25572
DRAWER 86
SHEET C-56