

PROVIDENCE, R.I.
CITY ENGINEER'S OFFICE
STREET LINE DEPT.
June 26, 1931.

053824

PLAT OF METROPOLITAN ROAD

FROM MT. PLEASANT AVE. TO EAST LINE OF KIMBALL ST.

BOARD OF ALDERMEN

MAY 21, 1931.

Scale 1=40'

480.39
480.33
480.36



AVE.

MT. PLEASANT

Alberto E. Nani & wife Elvira

Adrien U. Thereault

Marco Rozzi

FREESE ST.

Amelio Bernardo
c. con. 8'1/2" 17.85 off M. Rd.

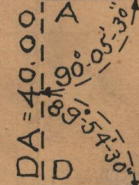
Loretta A. D'Ambra & wife Teresa
c. con. 8'1/2" 17.99 off

Johannas Hassell
c. con. 8'1/2" 17.76 off

Annie Swaine & Janet M. Ray

Flora M. De Cato widow of Fred T.

ST.



40

METROPOLITAN ROAD

40

AB = 480.33

DC = 480.39



89-55

Henry F. Collins & wife Clara M.
c. 8'k. 14.87 off M. Rd.
c. 8'k. 5.13 off
c. 8'k. 20.10 off
c. 8'k. 19.98 off

Eleuterio Sanopadre & wife Adelina
b. 8.16.54 off
b. 8.16.65 off

John A. Healy & wife Mary E.

Winifred M. Long wife of Daniel U.

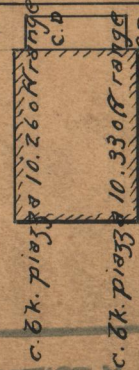
Martin U. Leyden & wife Bridget M.
f. con. 8'1/2" 14.02 off
f. con. 8'1/2" 15.87 off

John
f. con. 8'1/2" 14.23 off
f. con. 8'1/2" 15.94 off

F. Fox
f. con. 8'1/2" 14.14 off
f. con. 8'1/2" 15.87 off

Mary G. Lyons

KIMBALL



OFFICE NO. 25
DRAWER 86
SHEET C-52