

J.L.L. 2824-98

PROVIDENCE, R.I.
CITY ENGINEER'S OFFICE

STREET LINE DEPT.

June 9, 1931.

053779

PLAT OF
TYLER STREET

FROM
CALHOUN AVE. TO WESTERLY LINE OF FAITH ST.

BOARD OF ALDERMEN

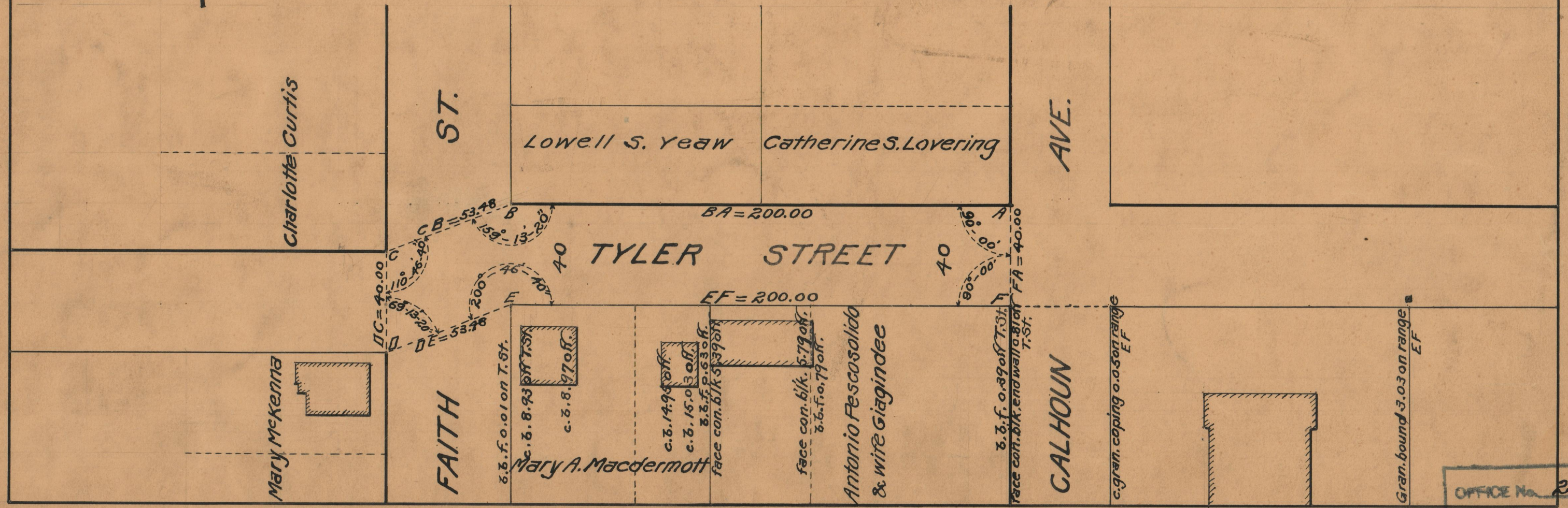
APRIL 16, 1931.



Scale = 1" = 40'

253.48

253.48



Charlotte Curtis

ST.

Lowell S. Yeaw

Catherine S. Lovering

AVE.

Mary McKenna

FAITH

c.b.f. 0.01 on T.St.

Mary A. Macdermott

c.b. 14.95 off.

c.b. 15.03 off.

c.b.f. 0.63 off.

face con. b/k 5.39 off.

face con. b/k 5.79 off.

c.b.f. 0.79 off.

Antonio Pescosolido

& wife Giagindee

c.b.f. 0.39 off T.St.

face con. b/k end wall 0.81 off T.St.

CALHOUN

c.gran. coping 0.05 on range EF

Gran. bound 3.03 on range EF

OFFICE No.	25548
DRAWER	86
SHEET	C-48