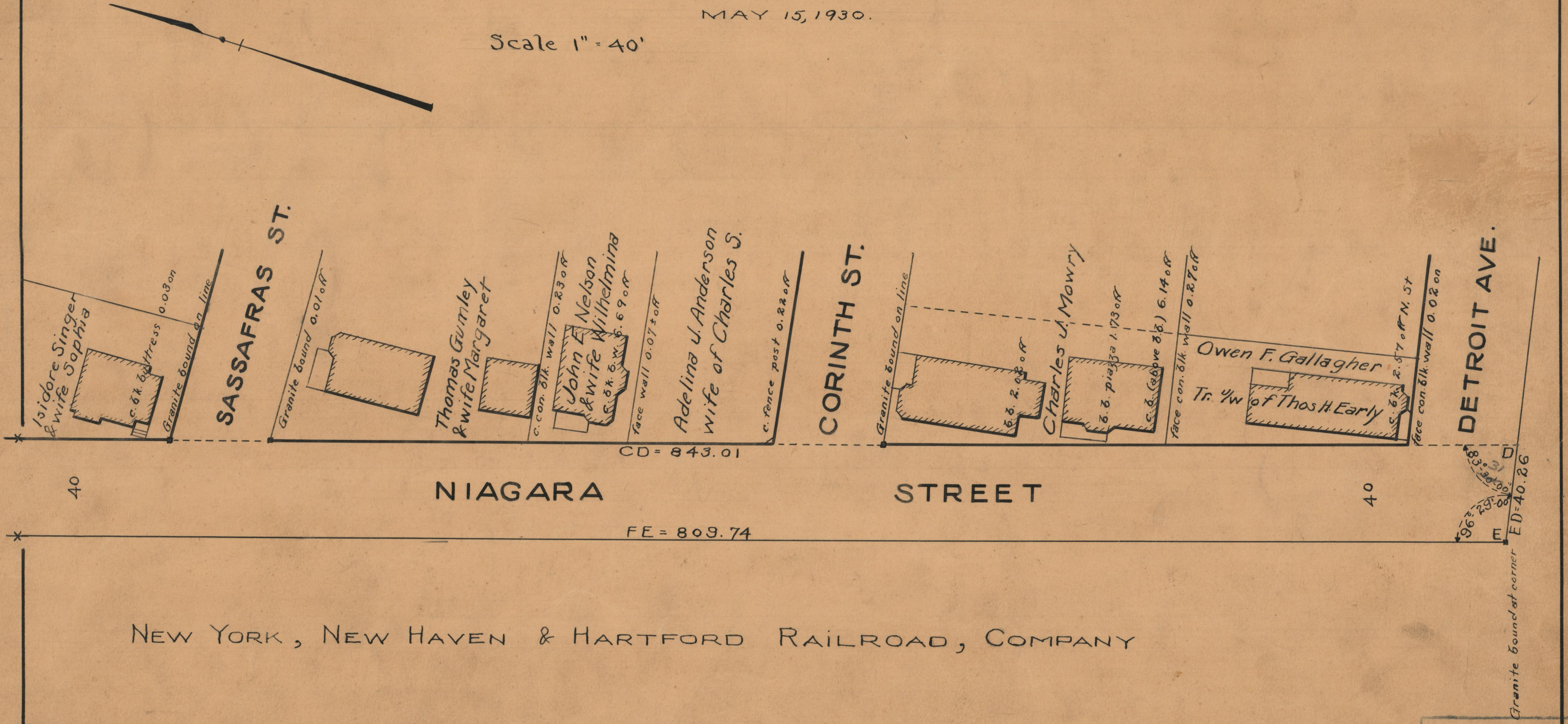


PLAT OF  
**NIAGARA STREET**  
 FROM  
 SACKETT ST. TO SOUTH LINE OF DETROIT AVE.  
 IN TWO SHEETS  
 BOARD OF ALDERMEN

PROVIDENCE, R.I.  
 CITY ENGINEER'S OFFICE  
 STREET LINE DEPT.  
 June 9, 1931  
 053778

MAY 15, 1930.

Scale 1" = 40'



NEW YORK, NEW HAVEN & HARTFORD RAILROAD, COMPANY

OFFICE No.	25547
DRAWER	86
SHEET	C-47