

PLAT OF NIAGARA STREET

FROM
SACKETT ST. TO SOUTH LINE OF DETROIT AVE.

IN TWO SHEETS

BOARD OF ALDERMEN

MAY 15, 1930

Scale 1" = 40'

296.38	336.38
843.01	105.41
843.01	809.74
122.33	122.33
1201.50	1201.50
2475.06	2475.06
1237.52	1237.52

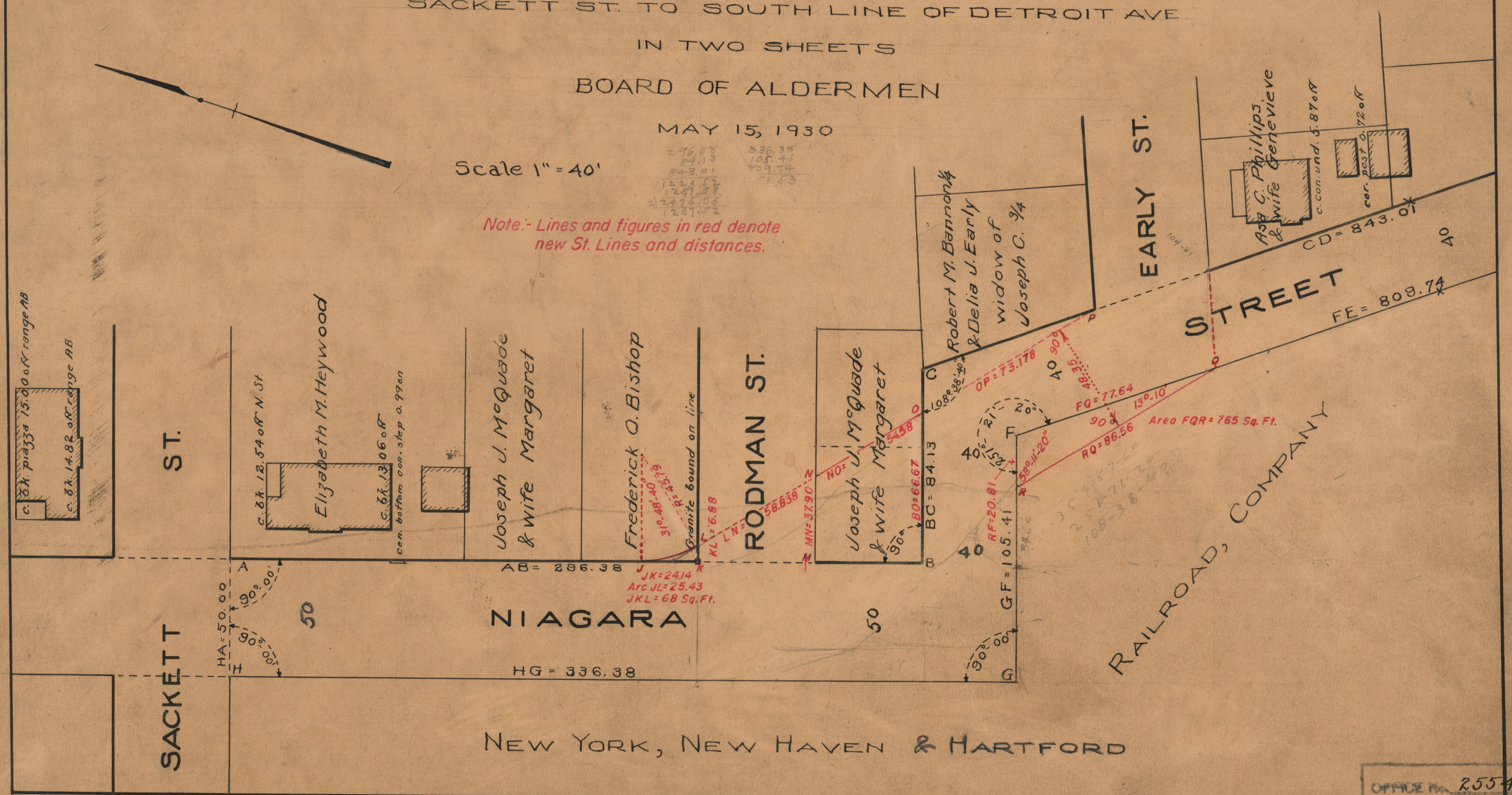
Note:- Lines and figures in red denote new St. Lines and distances.

PROVIDENCE, R.I.
CITY ENGINEER'S OFFICE

STREET LINE DEPT.

June 9, 1931

053777



NEW YORK, NEW HAVEN & HARTFORD

OFFICE No.	25546
DRAWER	86
SHEET	C-46