

PROVIDENCE, R.I.
CITY ENGINEER'S OFFICE

STREET LINE DEPT.

May 25, 1931.

053742

PLAT OF
WHEELER AVENUE

FROM
THE CITY LINE TO ROGER WILLIAMS PARK

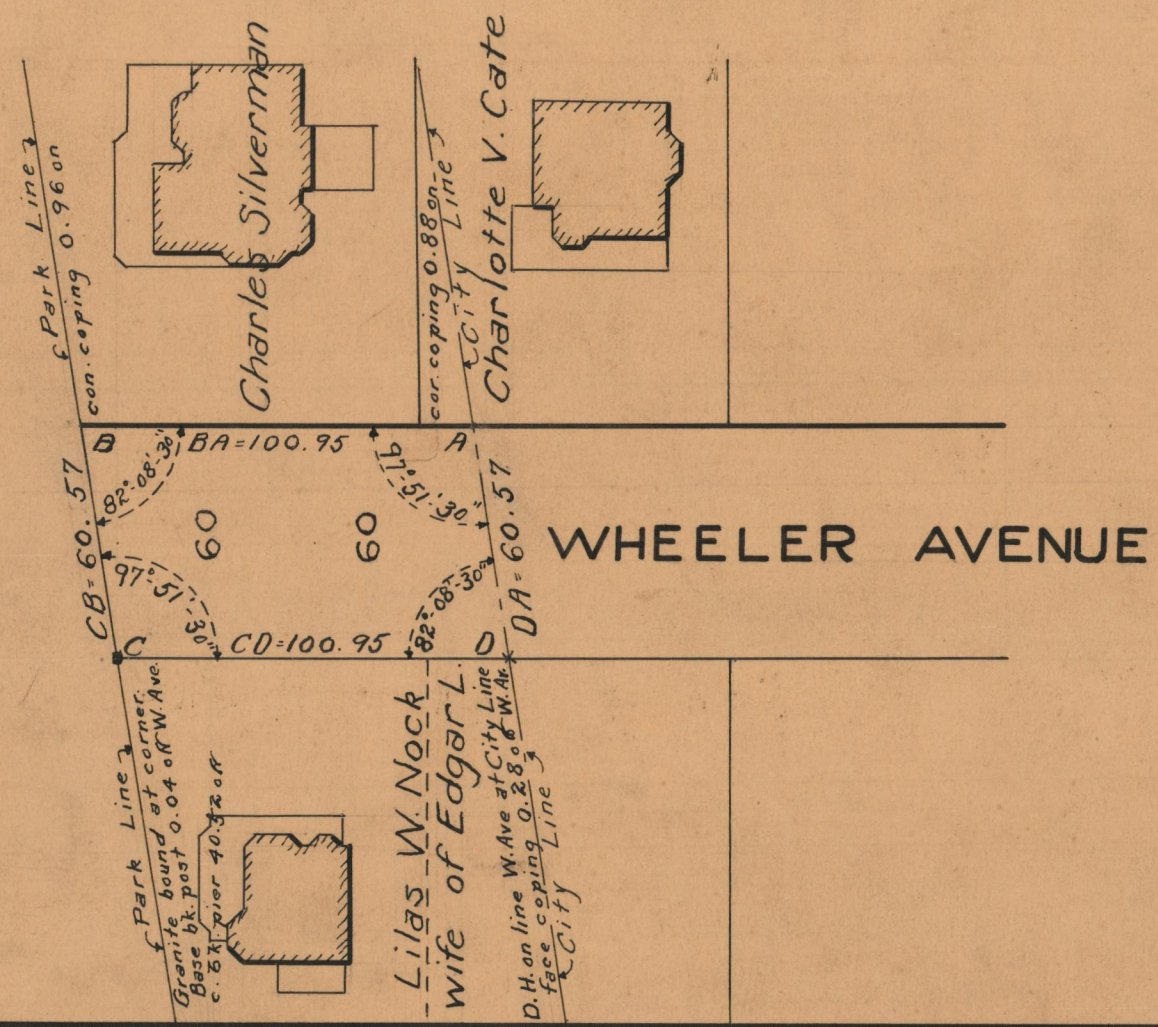
BOARD OF ALDERMAN

OCTOBER 16, 1930

SCALE 1"=50'



Roger Williams Park



OFFICE No.	25529
DRAWER	86
SHEET	C-38