

PLAT OF LORIMER AVENUE

FROM
ROCHAMBEAU AVE. TO BURLINGTON ST.

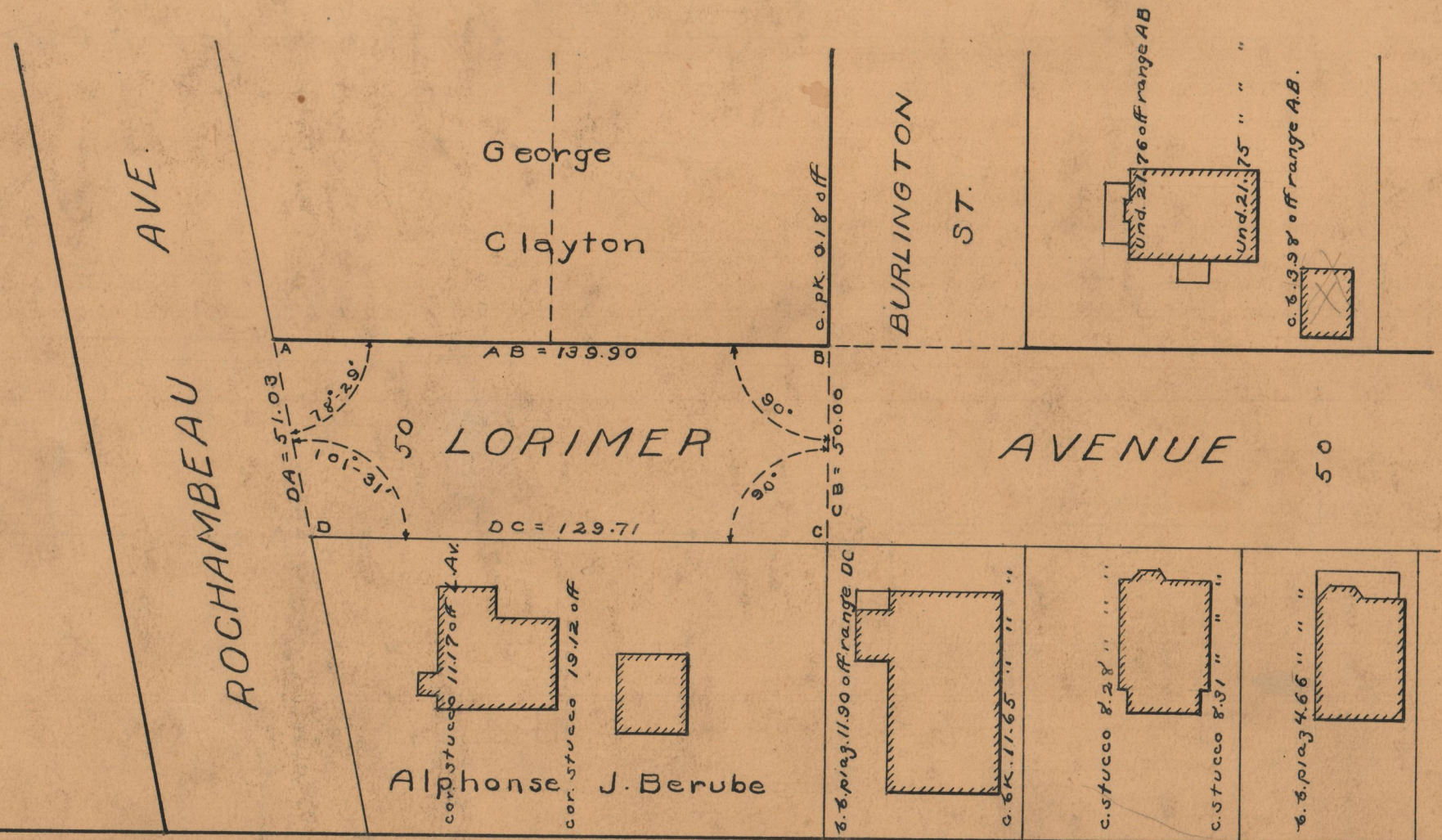
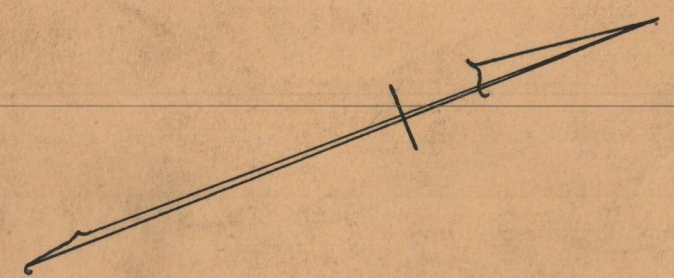
BOARD OF ALDERMEN

OCTOBER 16, 1930

PROVIDENCE, R.I.
CITY ENGINEER'S OFFICE
STREET LINE DEPT.
March 6, 1931
053490

139.90
129.71
21269.61
134.800

Scale = 1" = 40'



OFFICE No.	25402
DRAWER	86
SHEET	C-3