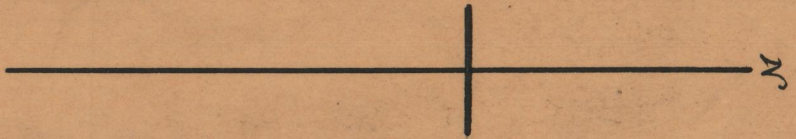


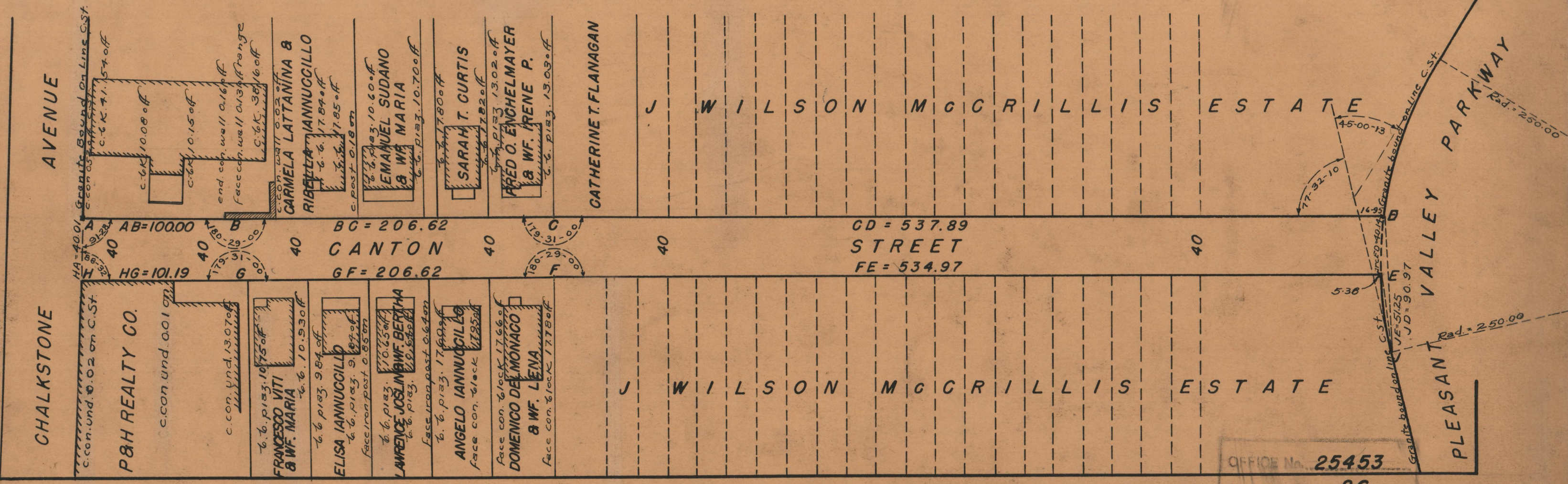
PLAT OF CANTON STREET

FROM
CHALKSTONE AVE. TO PLEASANT VALLEY P'K'Y.
BOARD OF ALDERMEN
APRIL 16, 1931

PROVIDENCE, R.I.
CITY ENGINEER'S OFFICE
STREET LINE DEPT.
JAN. 21, 1946
059507



SCALE - 1" = 60'



OFFICE No. 25453
 DRAWER 86
 SHEET C-17