

G.W.S. 2786-104

PROVIDENCE, R.I.
CITY ENGINEER'S OFFICE

STREET LINE DEPT.

Jan. 16, 1931.

053330

PLAT OF OREGON STREET

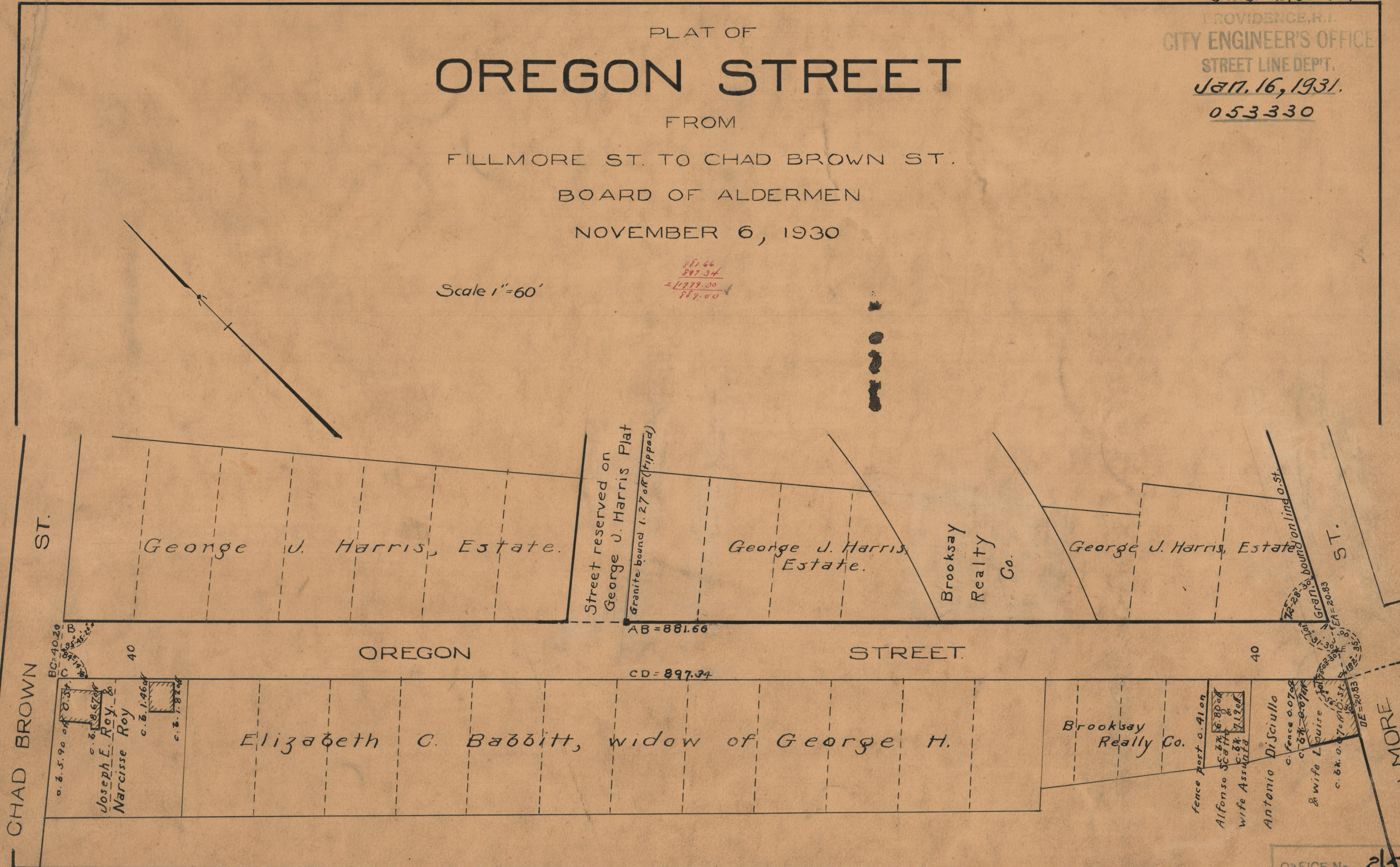
FROM
FILLMORE ST. TO CHAD BROWN ST.

BOARD OF ALDERMEN

NOVEMBER 6, 1930

Scale 1"=60'

281.66
897.34
21779.00
887.00



CHAD BROWN ST.

ST.

George J. Harris, Estate.

Street reserved on
George J. Harris Plat
Granite bound 1.27 of R (flipped)

George J. Harris
Estate.

Brooksday
Realty
Co.

George J. Harris, Estate

ST.

OREGON

STREET.

Elizabeth C. Babbitt, widow of George H.

Brooksday
Realty Co.

Joseph E. Roy &
Narcisse Roy
c. b. 1.46 of
c. b. 1.82 of

fence post 0.41 on
Alfonso Scotti &
wife Assunta
Antonio Di Sciullo
& wife Luire
c. b. x. 0.70 of
c. b. x. 0.70 of

OFFICE No. 25353

DRAWER 86

SHEET B-97