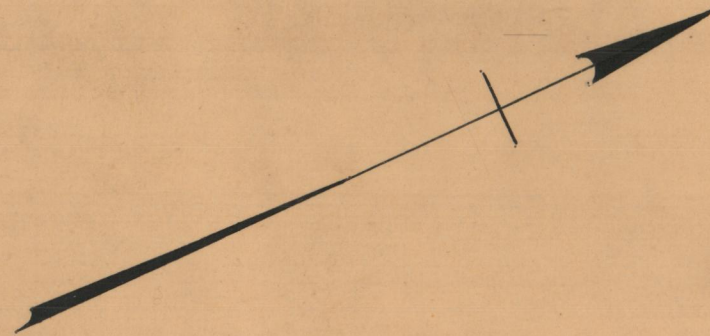


July 1, 1930

052858

# PLAT OF NINIGRET AVENUE

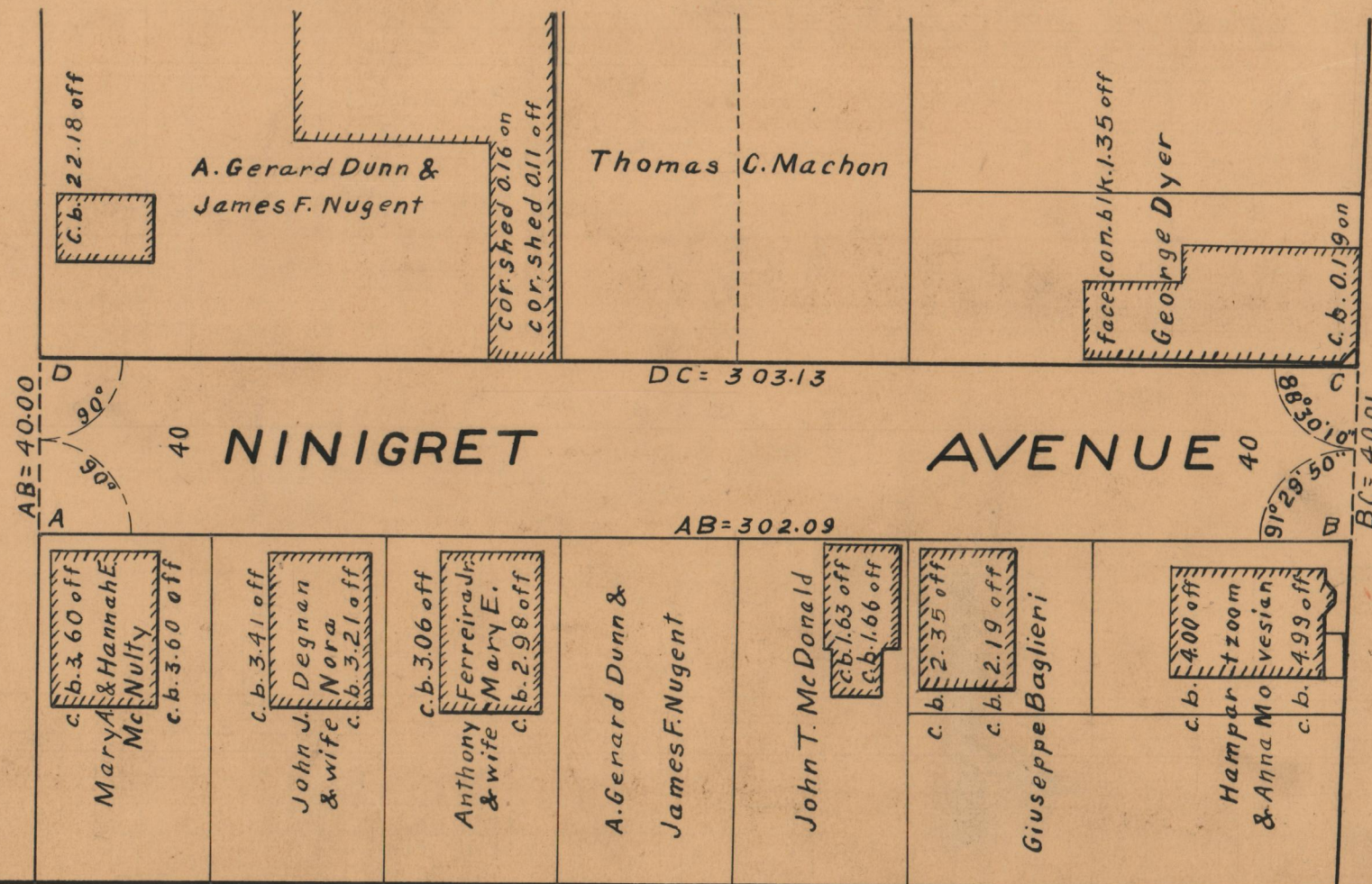
FROM  
POTTERS AVE. TO ANTHONY AVE.  
BOARD OF ALDERMEN  
JUNE 19, 1930



Scale 1" = 40'

ANTHONY AVE.

POTTERS AVE.



|            |       |
|------------|-------|
| OFFICE No. | 25296 |
| DRAWER     | 86    |
| SHEET      | B-9   |