

PRUDENCE AVENUE

FROM
POCASSET AVE. TO PLAINFIELD ST.

IN THREE SHEETS

BOARD OF ALDERMEN

OCTOBER 16, 1930

Scale 1" = 40'

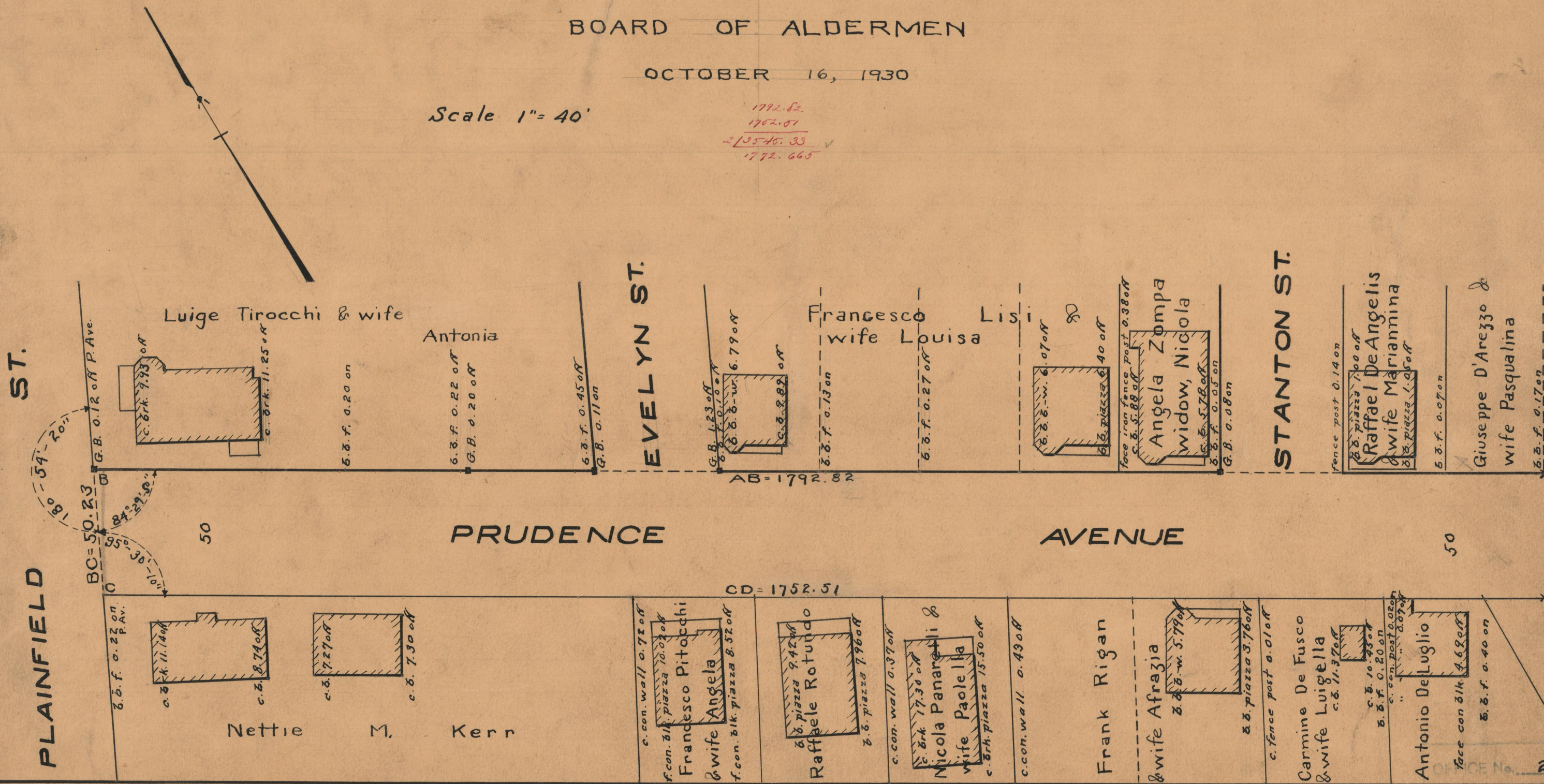
1792.82
1762.81
- 13546.33 ✓
1772.665

CITY ENGINEER'S OFFICE

STREET LINE DEPT.

Jan. 8, 1931

053302



OFFICE No. 25337
 DRAWER 86
 SHEET B-83