

PLAT OF PRUDENCE AVENUE

FROM POCASSET AVE TO PLAINFIELD ST.

IN THREE SHEETS

BOARD OF ALDERMEN

OCTOBER 16, 1930

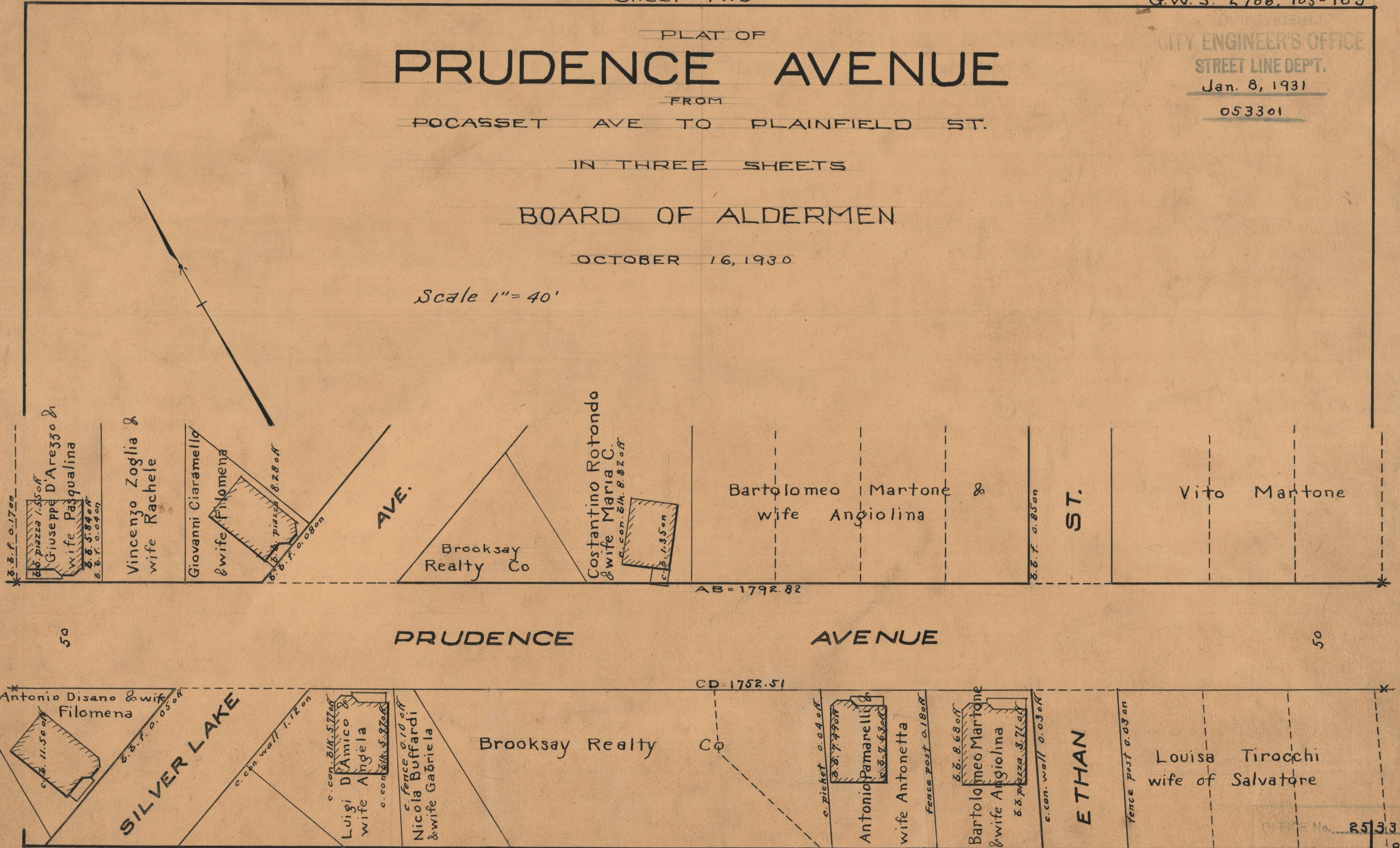
Scale 1" = 40'

CITY ENGINEER'S OFFICE

STREET LINE DEPT.

Jan. 8, 1931

053301



AB = 1792.82

CD = 1752.51

OFFICE No. 25336
 DRAWER " 86
 SHEET " B-82